

Sophos Web Appliances make web protection simple by blocking web threats at the source and providing safe, productive access to the web resources and tools users need—all while enforcing acceptable use policies and providing essential safeguards against data loss.

Complete web security and control at the gateway

Sophos Web Appliances are secure web gateway solutions that provide integrated protection against malware and unwanted web content. They are built on a robust hardware platform that delivers high-capacity, high-availability security with unrivaled simplicity and control. Staying ahead of the rapid evolution of threats, the appliances provide complete protection enabling risk free internet productivity.

- Protect users from malware, spyware, FakeAV, viruses and phishing.
- Guard against hijacked trusted sites.
- Enable productivity and enforce internet use policies.
- Block anonymizing proxies.
- Scan encrypted HTTPS traffic.
- Preserve bandwidth.
- Prevent the loss of sensitive data.

Sophos multi-stage filtering

Given the mission critical nature of the internet in today's business, basic URL filtering is no longer effective, especially with 85 percent of malware hosting sites now being legitimate trusted brands.

Sophos solves this problem with a unique 3-stage filter to protect against fast moving, rapidly changing, and highly sophisticated modern web threats that traditional URL filters cannot stop.



URL and proxy filtering augmented with unique reputation risk classification data across all categories with anonymizing proxy detection to ensure compliance.



Real-time anti-malware filtering with Sophos Behavioral Genotype protection and JavaScript emulation that detects even the most advanced zero-day threats in both HTTP and HTTPS encrypted traffic.



Content filtering includes a rich set of policy options for controlling file-types, potentially unwanted applications (PUAs), malware attempts to call home, and the posting of sensitive data to internet sites such as webmail, forums, or blogs.



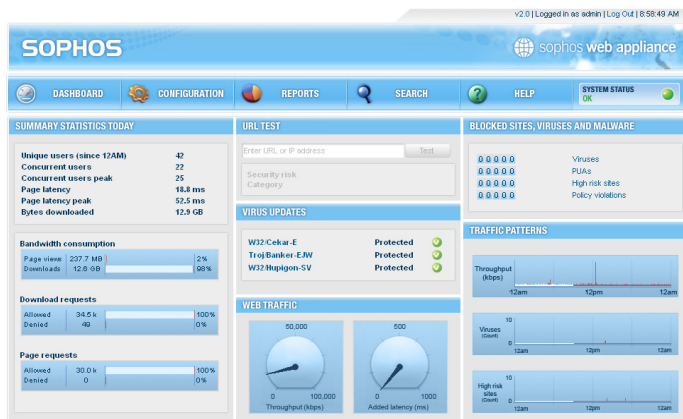
Key benefits

- » Inspects and secures web traffic against malware, spyware, FakeAV, viruses, adware and other unwanted applications
- » Offers protection from zero-day threats with Sophos unique real-time Behavioral Genotype malware scanning
- » Guarantees accurate detection with low system impact and negligible latency
- » Provides productivity filtering against 54 categories that sort websites according to their content
- » Augments productivity filtering with a full reputation and risk classification database
- » Automatically detects and blocks anonymizing proxies, preventing users from bypassing filter controls
- » Supplies group policy management of the web gateway with visual indicators and reports
- » Filters encrypted HTTPS traffic and automatically enforces SafeSearch
- » Updates automatically with the latest protection from SophosLabs™, a global network of threat analysis centers
- » Provides at-a-glance views of system performance via a web-based dashboard
- » Simplifies administration with a “3 clicks to anywhere” management console
- » Offers a unique managed appliance that provides over 50 onboard monitors to verify that hardware, software, traffic and updates are all operating to required standards
- » Flexible deployment options including explicit proxy, WCCP and transparent mode operation

Award winning ease-of-use

The Sophos Web Appliances' intuitive "3 clicks to anywhere" web-based management console is consistently awarded top marks in industry reviews, The real-time dashboard, point-and-click policy customization and relevant, actionable reporting makes web security and control easy.

- Gain insight into internet usage, traffic patterns and bandwidth consumption.
- Log users attempting to visit high risk sites and users downloading malware.
- Discover users attempting to download PUAs.
- See the amount of time a user has spent online and what sites they visit.
- Identify the top policy violators within an organization.



The dashboard provides easy access to the information you need

Comprehensive policy management and control

Flexible policy with Active Directory or eDirectory integration is made simple thanks to a wizard-driven configuration interface.

- A comprehensive URL classification database provides productivity filtering against 54 specific categories covering over 4 billion pages in 70 languages.
- Time-based policies enable administrators to define web browsing policies based on the time of day. For instance, organizations may wish to offer less restrictive browsing for their employees during lunchtime and after work.
- Site tagging enables flexible policy for individuals or groups, allowing access to custom tagged sites that might otherwise be blocked.



The wizard interface ensures easy policy management

Sophos Web Appliances filter web content against 54 specific categories:

- » Adult/Sexually explicit
- » Advertisements and pop-ups
- » Alcohol and tobacco
- » Arts
- » Blogs and forums
- » Business
- » Chat
- » Computing and internet
- » Criminal activity
- » Downloads
- » Education
- » Entertainment
- » Fashion and beauty
- » Finance and investment
- » Food and dining
- » Gambling
- » Games
- » Government
- » Hacking
- » Health and medicine
- » Hobbies and recreation
- » Hosting sites
- » Illegal drugs
- » Infrastructure
- » Intimate apparel and swimwear
- » Intolerance and hate
- » Job Search and career development
- » Kid's sites
- » Motor vehicles
- » News
- » Peer-to-peer
- » Personals and dating
- » Philanthropic and professional bodies
- » Phishing and fraud
- » Photo searches
- » Politics
- » Proxies and translators
- » Real estate
- » Reference
- » Religion
- » Ring tones/mobile phone downloads
- » Search engines
- » Sex education
- » Shopping
- » Society and culture
- » Spam URLs
- » Sports
- » Spyware
- » Streaming media
- » Tasteless and offensive
- » Travel
- » Violence
- » Weapons
- » Web-based email

Additional custom categories can be easily created using site tagging.

Protect against anonymizing proxies

Anonymizing proxies have become a significant security liability and productivity issue as they allow users to bypass their organization's web filters to access inappropriate content. Sophos Web Appliances protect against anonymizing proxies in a number of ways.

- Identification and blocking in real-time of new or obscure anonymizing proxies, including home-based private proxies, at the gateway before the URL request leaves the network.
- Scans continuously for newly published proxy sites through SophosLabs™ that catalogs hundreds of new proxies daily—over forty-times more than leading competitors.
- Adding all new proxies to the block list of every Sophos Web Appliance within minutes.

Zero-day threat protection with Behavioral Genotype technology

Modern web threats change rapidly, move quickly, and can appear anywhere, anytime. Sophos real-time Behavioral Genotype® Protection, pioneered by SophosLabs, provides detection that automatically guards against new fast moving threats – detecting over 85% of unknown threats before they are even cataloged.

- Effective zero-day protection from new unknown threats and malware variants.
- Dramatically outperforms signature based technologies.
- Real-time pre-execution scanning of obfuscated javascript determines the code's behavior without actually executing it.
- Malicious code is blocked at the gateway before it can run in the browser and cause infection.
- Updates are downloaded and applied as frequently as every 5 minutes.



File type control and data loss prevention

Sophos Web Appliances provide important capabilities that enable the productive use of your internet infrastructure and guard against data loss.

- The appliances block downloads of PUAs, including dialers, remote administration tools and system monitors.
- Flexible policy provides control over file types such as executables, streaming media, MP3s, and ActiveX components.
- Call-home detection prevents the loss of sensitive data being posted outside the organization by malware or infected PC's attempting to communicate with black-market servers.
- DLP control prohibits users from posting to webmail, blogs, and forums from within the organization, ensuring sensitive data cannot accidentally or intentionally leave the organization via the web.

Sophos Web Appliance awards and reviews



SC Magazine: 5/5 stars



CRN Test Center: 2008 Product of the Year



CRNtech: Top pick



Network Testing Labs: World Class Award



West Coast Labs: Checkmark certified

Gartner

"URL filtering suffers a fundamental flaw to be an effective security filter: it does not monitor threats in real time. Use URL filtering renewals and budget money to upgrade to a secure web gateway solution that is capable of detecting and filtering malicious Web traffic".

Managed Appliances

Sophos Web Appliances offer all the benefits of a managed service while still providing in-house control and oversight.

- Sophos Managed Appliances efficiently eliminate or automate most regular maintenance tasks, enabling you to do more with less.
- Remote “heartbeat” monitoring by the Sophos Network Operations Center ensures that every Sophos Managed Appliance is online and up-to-date, keeping the gateway operating at optimum efficiency and effectiveness.
- All system software and threat updates are applied automatically with zero-effort at no extra cost.
- Exception-driven alerting and on-demand remote assistance available 24x7x365 enables quicker, more reliable support.

Scalable and flexible deployments with centralized configuration and reporting

Sophos Web Appliances are ideal for organizations up to 15,000 users and beyond—from small branch offices to large corporate headquarters. Our Security Management Appliances (SMAs)—the SM2000 and SM5000—make larger deployments of up to 50 web appliances as easy as managing one single appliance.

- Single-point management of multiple web appliances across more than one location. Add a new appliance with just one mouse click.
- Real-time monitoring of multiple web appliances through a single central dashboard.
- Reporting data from all appliances is consolidated in the SMA and stored for up to three years.
- Deployment options including explicit proxy, web cache communications protocol (WCCP), and transparent mode operation provide the flexibility you need to easily integrate Sophos Web Appliances into your existing infrastructure.
- Integration with Microsoft Active Directory and Novell eDirectory services enables seamless user authentication with your existing directory services.

Industry-leading expertise 24x7x365

- Our 24x7x365 customer support operation is highly acclaimed, while SophosLabs, our global network of threat analysis centers, provides a rapid response to emerging and evolving threats.
- SophosLabs proactively scans billions of web pages a day and identifies more than 60,000 new samples of malware every day. New threat definitions and malicious URLs are automatically downloaded to the appliance, ensuring the most up-to-date protection available.

To find out more about any Sophos Web Appliance, visit www.sophos.com/products

Specification

Security and Control

- » Productivity and Reputation URL filtering
- » Proxy filtering
- » Real-time behavioral malware filtering
- » HTTPS filtering
- » True file type control
- » Data loss prevention

Hardware

Sophos Web Appliances

	WS100*	WS500	WS1100
Processor	ULV Dual core	Dual core	Quad core
Hard drive	250GB SATA	250GB SATA	1TB SATA
Power supply	Single 100/240V	Single 100/240V	Single 100/240V

Security Management Appliances

	SM2000	SM5000
Redundancy	n/a	Yes
Processor	Quad-core	Quad-core
Hard drive	1TB SATA	2TB SATA RAID10
Power supply	Single 100/240V	Dual hot-swap 100/240V

Installation

- » 1U rack mounted

Deployment

- » Explicit Proxy, Web Cache Communications Protocol (WCCP), Transparent (router redirect or network bridge mode)
- » Microsoft Active Directory and Novell eDirectory integration support

Regulatory/safety certification

- » UL, CE, FCC, VCCI, C-Tick, TÜV-GS, SABS, RoHS, WEEE

Hardware warranty

- » Up to 3-year advance replacement (subject to valid software licensing)

Certifications

- » CIPA compliance, Network Testing Labs Award

* WS100 appliance only available in select regions at launch