



Pocket Guide

Deploy in Pure Bridge Mode

Product: Sophos XG Firewall

Contents

Overview	3
Network Diagram	3
Prerequisites	3
Features Not Supported	4
Configuration	5
Results	7
Copyright Notice.....	8

Overview

There are mainly two types of Bridge Mode deployments in Sophos XG Firewall.

1. Deploying Sophos XG Firewall as a pure bridge.
2. Deploying Sophos XG Firewall in mixed mode.

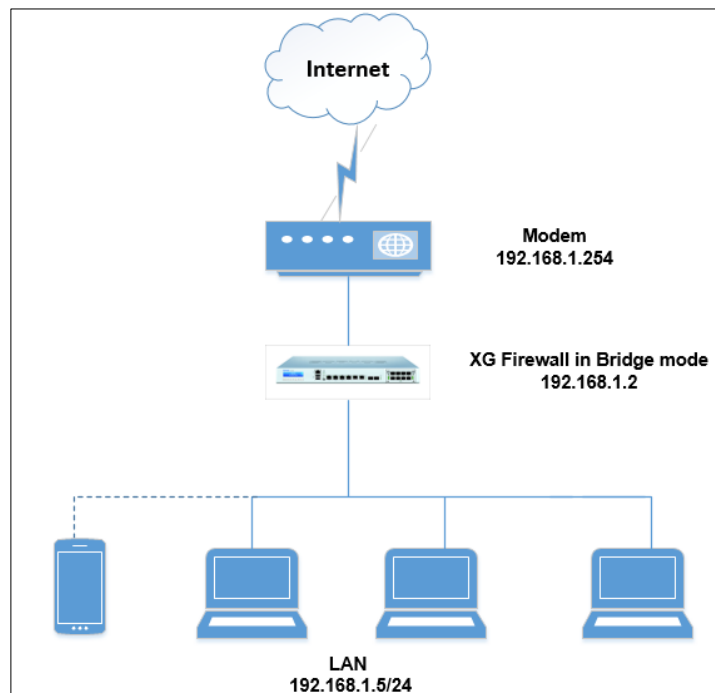
This guide describes how to deploy Sophos XG Firewall in pure bridge mode between LAN and WAN.

When you deploy Sophos XG Firewall as a layer 2 pure bridge, it facilitates deep packet inspection, IPS, malware scanning, and email content scanning. It does not require a change in the existing configuration or network schema.

When you deploy it as a Layer 3 bridge, Sophos XG Firewall provides routing in addition to these security features.

Bridge interfaces do not support some features. For the list, click [here](#).

Network Diagram



Prerequisites

- You must have read-write permissions on the SF-OS Admin Console for the relevant features.
- This feature is not supported when the device is deployed on Microsoft Hyper-V hypervisors.

Features Not Supported

- Dynamic DNS
- Multicast Routing
- DHCP Client
- IPsec VPN
- VLAN
- PPPoE

Configuration

Log in to the SF-OS Admin Console.

- Go to **Configure > Network > Interfaces**, click **Add Interface** and click **Add Bridge**.
- Clear the **Enable routing on this bridge pair** check box to send traffic to the upstream device. The device will now act as a layer 3 bridge.
- Under **Member Interfaces**, select the required **Interfaces** and **Zones**.
- Select the **IPv4 Configuration** check box and enter the IP address and gateway details.


The screenshot shows the 'General Settings' form for a bridge interface. The 'Name' field is set to 'LAN_WAN'. The 'Description' field is empty. The 'Enable routing on this bridge pair' checkbox is unchecked. Under 'Member Interfaces', there is a table with two columns: 'Interface' and 'Zone'. The first row has 'Port1' and 'LAN', and the second row has 'Port2' and 'WAN'. Below this, the 'IPv4 Configuration' checkbox is checked and highlighted with a red box. The 'IPv4/Netmask' field is set to '192.168.1.2' and '/24 (255.255.255.0)'. The 'Gateway Name' is 'Gateway_1' and the 'Gateway IP' is '192.168.1.1'. The 'IPv6 Configuration' checkbox is unchecked. At the bottom, there are 'Save' and 'Cancel' buttons.

IPv6 Configuration

If your network is on the IPv6 protocol, you can configure the bridge interface for **IPv6 Configuration**.

The screenshot shows the 'IPv6 Configuration' form. The 'IPv6/Prefix' field is set to '3ffe:501:ffff:101' and '64'. The 'Gateway Name' is 'Gateway1' and the 'Gateway IP' is 'fe80::1'. The 'IPv6 Configuration' checkbox is checked.

Under **Advanced Settings**, specify the **MTU** and **Override MSS** details.

Advanced Settings 

MTU [1280-1500]

Override MSS [536 - 1460]

- MTU: Largest physical packet size (in bytes) that a network can transmit.
- MSS: Amount of data that can be transmitted in a single TCP packet.

Note:

Change the default values in **Advanced Settings** only if you require the change.

Click **Save**.

Results

You have deployed Sophos XG firewall in bridge mode. It will forward STP, RSTP and multicast routing packets.

Copyright Notice

Copyright 2016-2017 Sophos Limited. All rights reserved.

Sophos is a registered trademark of Sophos Limited and Sophos Group. All other product and company names mentioned are trademarks or registered trademarks of their respective owners.

No part of this publication may be reproduced, stored in a retrieval system, or transmitted, in any form or by any means, electronic, mechanical, photocopying, recording or otherwise unless you are either a valid licensee where the documentation can be reproduced in accordance with the license terms or you otherwise have the prior permission in writing of the copyright owner.