

# SOPHOS

Security made simple.

# Sophos UTM Software Appliance

## Quick Start Guide

**Product version:** 9.3 or higher

**Document date:** Tuesday, September 12, 2017

## Sophos UTM Minimum Hardware Requirements

Intel compatible CPU 1.5 GHz+

1 GB RAM [2 GB recommended]

Dual Core [Quad Core recommended]

20 GB hard disk drive [40 GB recommended]

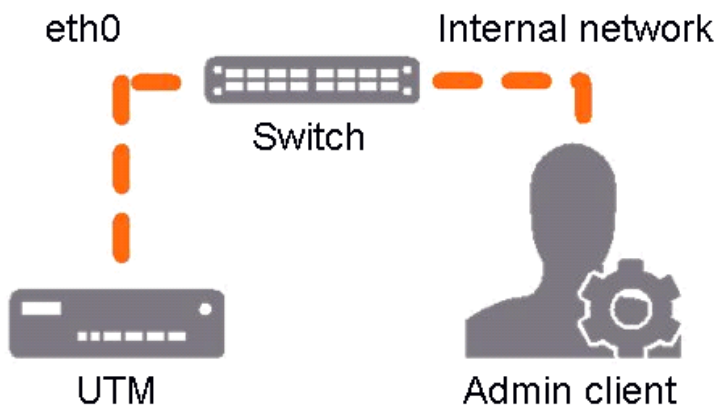
Bootable CD-Rom drive or Sophos Smart Installer

2+ NICs [WAN, LAN]

## Client Hardware/Software Requirements

Any system capable of running a current version of Firefox, Internet Explorer, or Chrome. Best if managed with keyboard and if a mouse is available.

WebAdmin is running on HTTPS at port 4444.



### 1. Install the software

Install the Sophos UTM V9 software on a separate host. The installation will completely erase all data on the hard disk including all programs and the operating system. After the security system has rebooted (a process which, depending on hardware, can take up to five minutes), ping the IP address of the UTM to make sure it is reachable. The default address is 192.168.2.100, but you will be prompted to set this during the installation. Make note of the new IP if you change it.

## Workstation Connection Properties:

IP address: Any address in the range 192.168.2.1 through 192.168.2.99

Netmask: Enter 255.255.255.0

Standard gateway: Enter the IP address of the UTM internal network card: 192.168.2.100

DNS server: Enable this option and enter the IP address of the internal network card (eth0): 192.168.2.100

Basic system setup

Hostname:

Company or Organization Name:

City:

Country:

admin account password:

Repeat password:

admin account email address:

These settings must be made before the system can be used. Please note that ALL fields must be filled in and the hostname must not contain special characters or spaces. After applying the settings, log into the system with username admin and the password you set below.

IMPORTANT-READ CAREFULLY BEFORE OPERATING THIS SOFTWARE

SOPHOS UTM9

Login to WebAdmin

Username:

Password:

Login

## 2. Use your browser to make the initial connection to the WebAdmin GUI

You will need to configure a workstation with the necessary LAN settings to access WebAdmin. You can change these settings later to match your existing network. The location of the menu for these settings depends on the operating system of your workstation.

Example: With Windows 7, the menu can be found under *Start > Control Panel > Network and Sharing Center*.

Once your browser is correctly configured, launch the browser and enter the IP address of the Sophos UTM WebAdmin as follows:

https://IP address:4444 [e.g. https://192.168.2.100:4444].

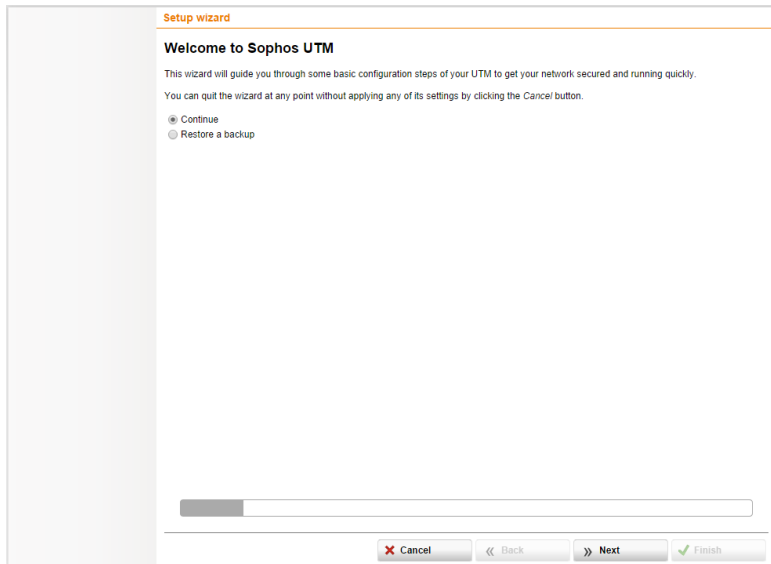
## 3. Enter the administrator contact and set admin password

In the basic system setup window, enter the administrator contact and the passwords for the Sophos UTM appliance. Be sure to remember the password you choose. This will be needed in step 4.

## 4. Log in to WebAdmin

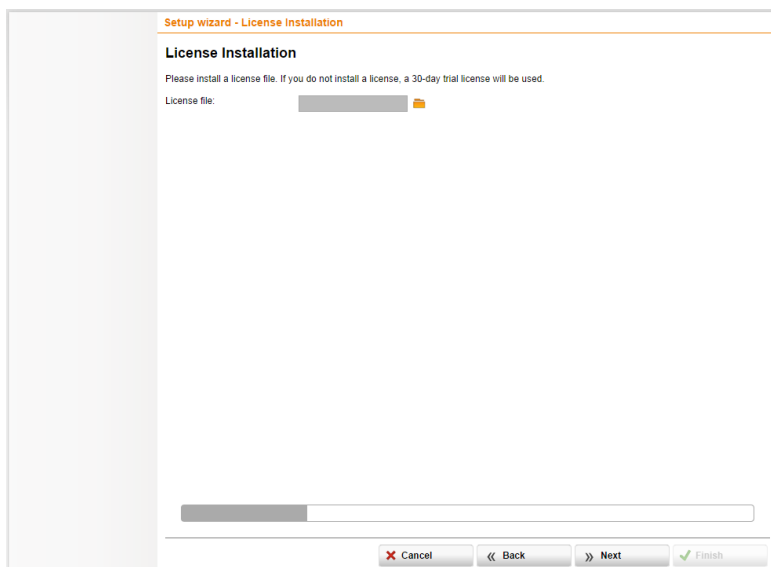
Username: admin

Password: Password of the WebAdmin user as set above in step 3.



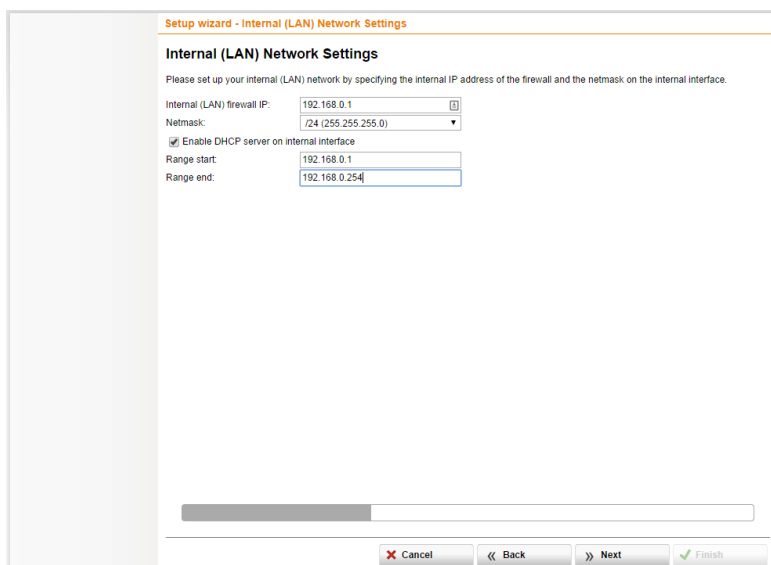
## 5. Use the setup wizard

Select *Continue* and click *Next* to proceed with your installation.



## 6. Upload a license

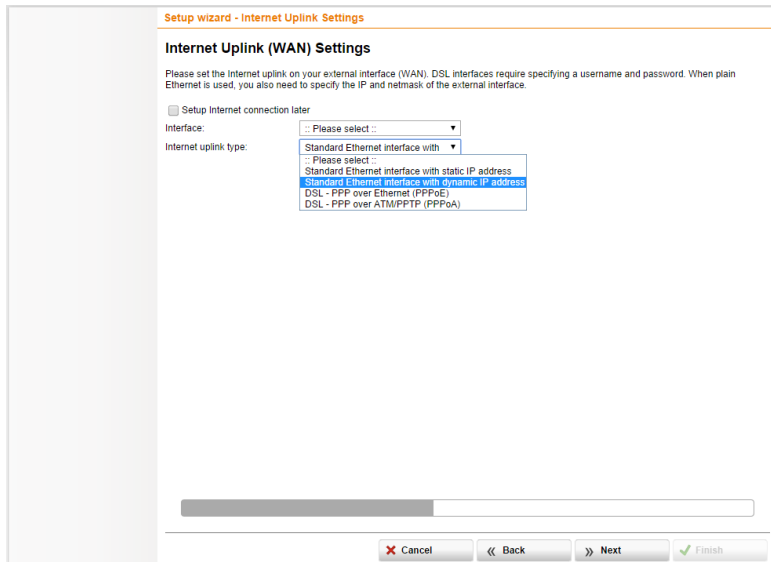
If you already have a valid license for this UTM, click the yellow browser folder to locate your UTM license, then click the *Start upload* button to apply it. If no license is specified, a full 30-day trial will begin. Click *Next*.



## 7. Specify your LAN settings

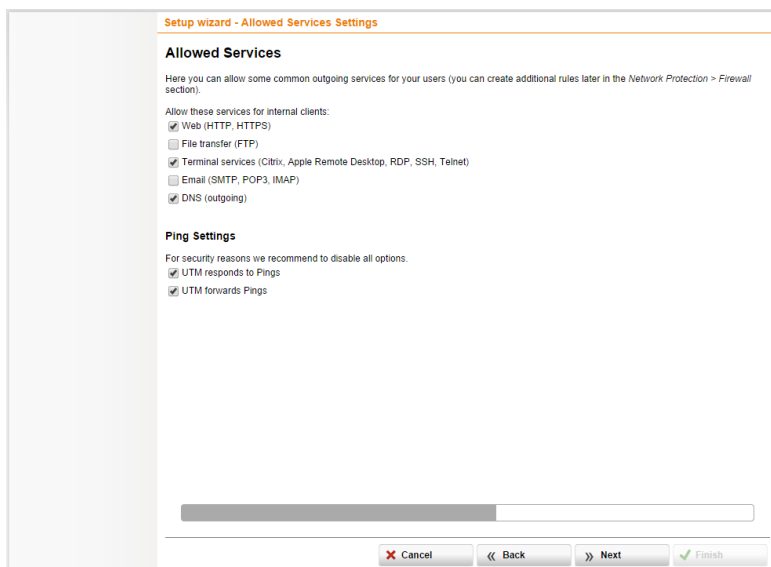
This will default to the IP address you set during the initial installation. If you wish to change this, enter the new IP address you want the UTM appliance to use on the internal network, along with the netmask. Leave DHCP server enabled, and click *Next*.

Settings will not be applied until the wizard is complete.



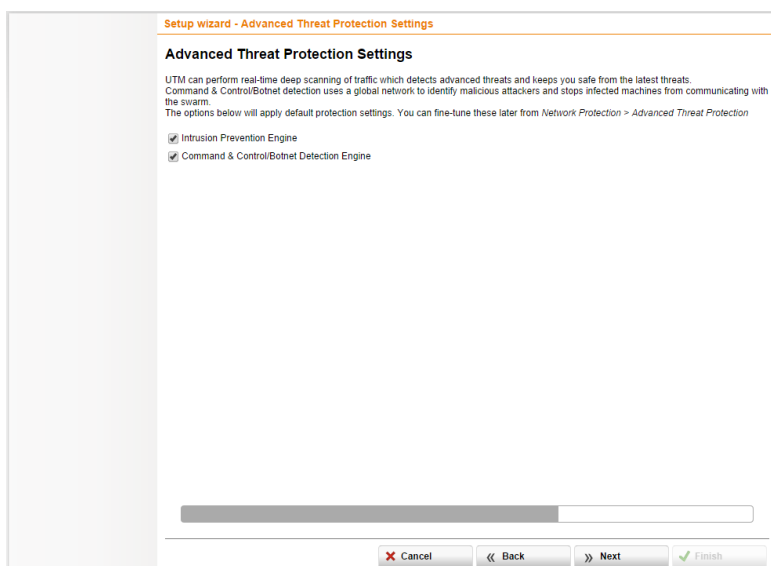
## 8. Specify your Internet connection settings

Select the interface that will be connected to an Internet uplink. The required configuration settings will depend on the type of connection you are provided. If you are unsure what settings to choose, consult the settings provided by your ISP, or try *Standard Ethernet interface with dynamic IP address*, if no settings were provided. Click *Next*.



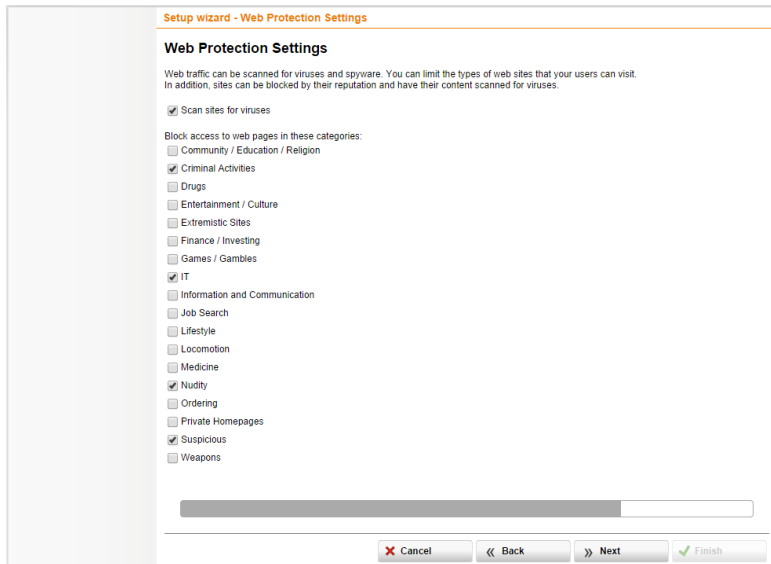
## 9. Configure the firewall

By default, all traffic will be blocked. Select which services you want to allow. You can further configure rules in the *Firewall* section after the wizard completes. Click *Next*.



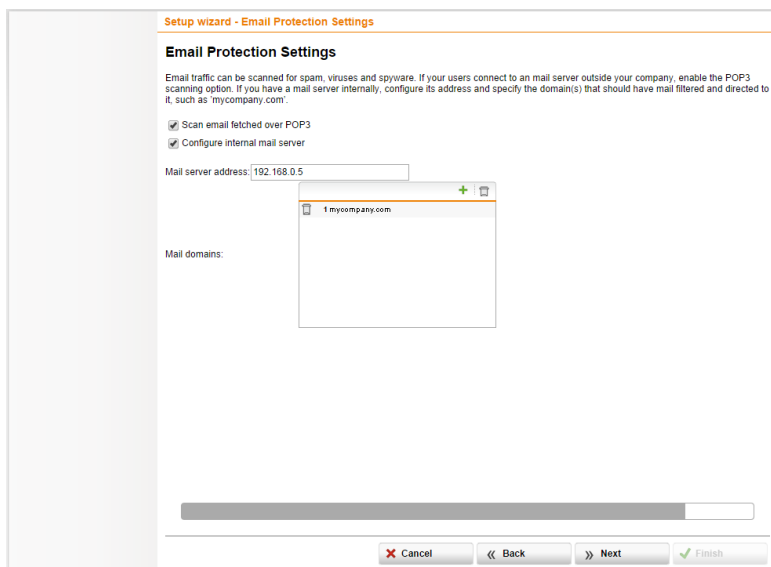
## 10. Configure Advanced Threat Protection Settings

Enable the Intrusion Prevention Engine to scan inbound traffic for threats. Enable the Command & Control/Botnet Detection Engine to detect and prevent persistent threats that may exist within the network from phoning home. Click *Next*.



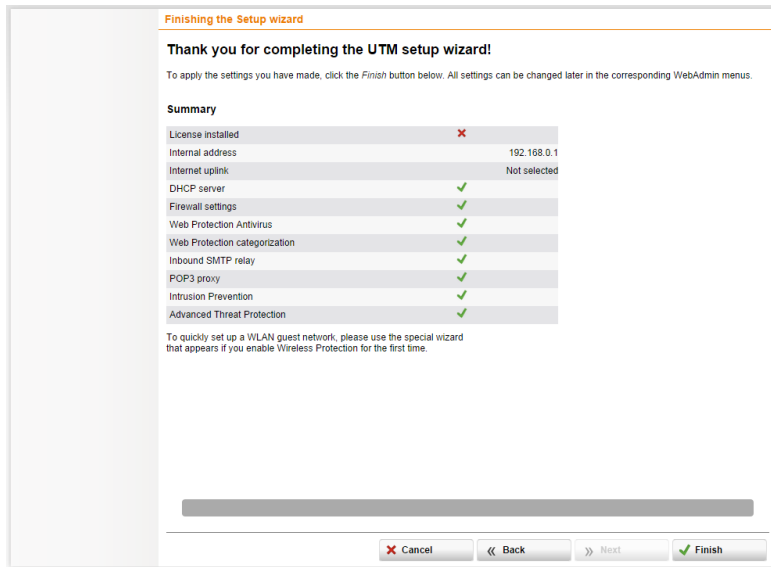
## 11. Configure web content filtering

If you want to protect and control web surfing, select options for virus and spyware scanning and/or the categories you wish to deny to your users. Click *Next*.



## 12. Configure email filtering

If you want to filter incoming messages to your mail server (SMTP) or clients (POP3) select the desired mode. The example illustrates mail settings for "mycompany.com" which will be scanned for spam and viruses and then sent to the mail server IP internally at 192.168.0.5.



## 13. Review and finish

The summary screen shows the configuration about to be created. Click *Finish* and your settings will be applied.

Features configured by the wizard can be edited as desired using any of the WebAdmin menus to alter the settings at any time to fit your needs. See the Sophos UTM Administration Guide\* for more setup options. Enjoy your Sophos UTM.

\* Available via *WebAdmin > Support > Documentation > Manual* or the knowledgebase:

[sophos.com/kb](http://sophos.com/kb).

Vendite Regno Unito:

Tel: +44 (0)8447 671131

E-mail: [sales@sophos.com](mailto:sales@sophos.com)

Boston, USA | Oxford, Regno Unito

© Copyright 2014. Sophos Ltd. Tutti i diritti riservati.

Tutti i marchi sono proprietà dei rispettivi titolari.

Sophos Quick Start Guide 12.11v1.dIT

Vendita Nord America:

1-866-866-2802

E-mail: [nasales@sophos.com](mailto:nasales@sophos.com)

Vendite per Australia & Nuova Zelanda:

Tel: +61 2 9409 9100

E-mail: [sales@sophos.com.au](mailto:sales@sophos.com.au)

**SOPHOS**