

SOPHOS

simple + secure

Sophos Endpoint Security and Control Deployment Packager guide

Product version: 9.7

Document date: April 2011



Contents

1 About this guide.....	3
2 About the Deployment Packager tool.....	4
3 System requirements.....	5
4 Create a package via the graphical user interface.....	6
5 Appendix: Create a package via the command line.....	9
6 Technical support.....	11
7 Legal notices.....	12

1 About this guide

This guide describes how to use the free Sophos Deployment Packager tool. For information about how Managed Service Providers (MSPs) may use this tool, see the *Managed Service Provider Guide*.

It is assumed that you are familiar with Sophos Enterprise Console and Sophos Endpoint Security and Control.

Sophos documentation is published at www.sophos.com/support/docs/.

2 About the Deployment Packager tool

The Deployment Packager creates a single self-extracting archive file from a set of Sophos endpoint setup files, for installing Endpoint Security and Control on Windows endpoint computers. The packaged file includes configuration options such as silent/interactive installation, installation component choices, update path/credentials and endpoint group membership. Packages made with the Deployment Packager always attempt to remove other potentially-clashing antivirus/security software when installed. It may be necessary for you to produce several packages, each meeting the requirements of different endpoint types.

You can run the Deployment Packager tool through either its graphical user interface (GUI) or command-line interface (CLI).

- The GUI is easier for one-off deployments.
- The CLI is more versatile for repeated deployments.

A string to invoke the command line version with options can be stored in a text file, or regularly run from a scheduled batch file, ensuring that the installation packages are always up-to-date. So, if you are managing large numbers of computers where there is a need for frequent installation on endpoints, then the CLI is preferable.

Instructions for using the Deployment Packager via the command line can be found in [Appendix: Create a package via the command line](#) (page 9).

3 System requirements

The minimum requirements to run the Deployment Packager tool are as follows:

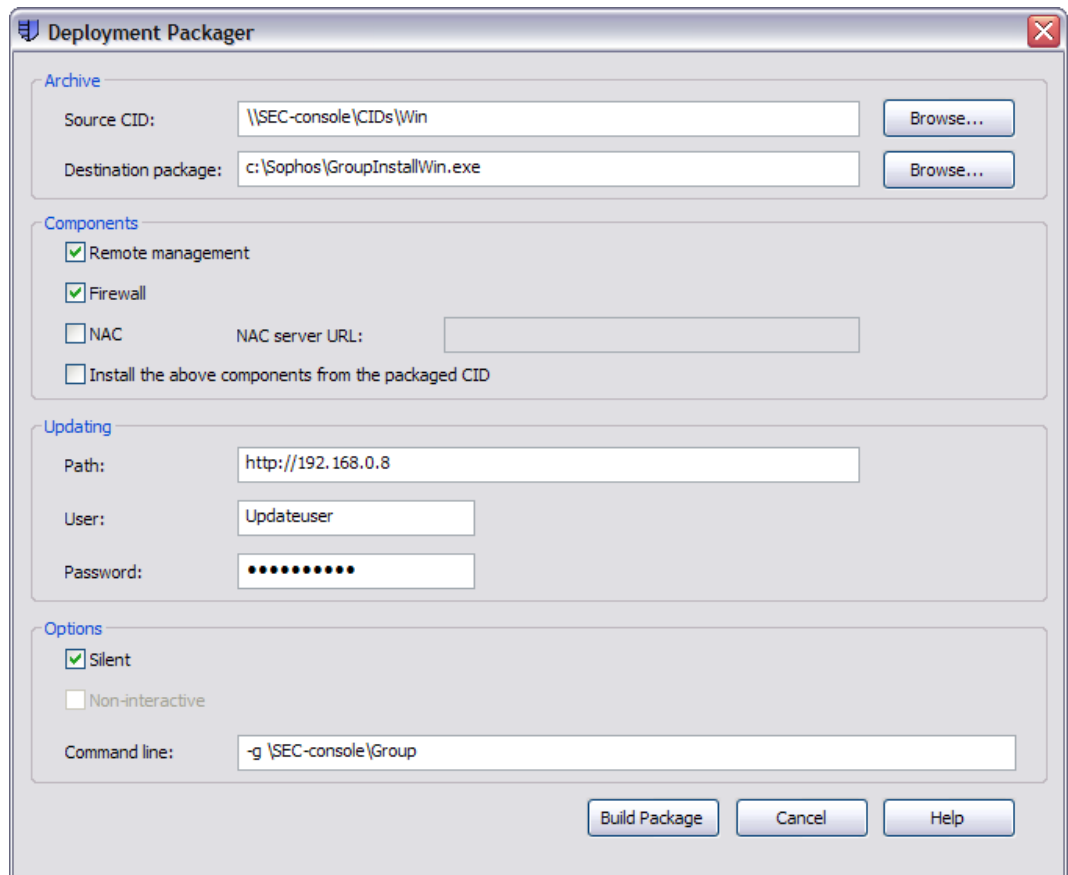
- Windows operating systems: see <http://www.sophos.com/products/enterprise/endpoint/security-and-control/management/sysreqs.html>
- Disk space: 1 GB
- Memory: 1 GB
- Processor: 2 GHz Pentium or equivalent

You should also be aware of system requirements for the packaged endpoint components. See <http://www.sophos.com/products/all-sysreqs.html>.

4 Create a package via the graphical user interface

1. To create a package via the user interface, run DeploymentPackager.exe.

The Deployment Packager dialog is displayed.



2. In the **Archive** panel, enter the following:
 - a) In **Source CID**, specify the location of the central installation directory containing the endpoint software installation files. The Source CID can be a local path or a UNC.
 - b) In **Destination package**, specify the destination path for the output installer package. You can also specify an optional filename; if this is not supplied, the Deployment Packager will use a default filename.

3. In the **Components** panel, select from the following:

■ **Remote management**

This installs and enables the Sophos Remote Management System (RMS), which allows Enterprise Console to control Endpoint Security and Control. For Managed systems you must enable this component. For information on indirectly-managed endpoints, see <http://www.sophos.com/support/knowledgebase/article/67372.html>

Note: When you select this option, endpoints obtain their updating path and credentials from Enterprise Console through RMS.

■ **Firewall**

This installs the Sophos Client Firewall.

Note: If you want to install this option, check endpoint system requirements at <http://www.sophos.com/products/all-sysreqs.html>

■ **NAC**

This installs Sophos NAC (Network Access Control).

■ **Install the above components from the packaged CID**

This includes the chosen components in the deployment package. Otherwise, only Sophos AutoUpdate is included; the other components are downloaded from the update source.

Note: The endpoint installer is unable to use a proxy server. If the update location is accessed through a proxy server, then the required endpoint components must be included in the package.

Note: If you select **Remote management** and **Install the above components from the deployment package**, all **Updating** details are obtained from Enterprise Console and are grayed out.

4. In the **Updating** panel, for indirectly-managed endpoint packages or where remote management is enabled but not included in the package, enter the update path and credentials. You may set "<port number>" after an HTTP URL; if unset, this defaults to 80.

Note: Credentials are obfuscated in the package; however, accounts set up for endpoints to read update server locations should always be as restrictive as possible, allowing only read-only access.

Note: Endpoints will attempt to use their system proxy settings only if set using the environmental variables `http_proxy` or `all_proxy`. Proxy settings in Windows Control Panel Internet Options or Internet Explorer are ignored. `_proxy` variable values take the format `_proxy=[protocol://][user:password@]host[:port]`, for example `http_proxy=http://user:password@proxy:8080`

5. In the **Options** panel, select options that determine how the installation program will run on endpoint computers.

- **Silent**

The program will run in silent mode. If you select this, the **Non-interactive** option is automatically selected and grayed-out.

- **Non-interactive**

The program runs in non-interactive mode.

- **Command line**

Use this edit box to specify endpoint setup installation options. Always specify group membership using the -g option, as shown in the screenshot above, so that each installer is specific to and sets up endpoints to be members of existing groups.

The packager does not check these options for errors.

For more details, see <http://www.sophos.com/support/knowledgebase/article/12570.html>.

6. Click **Build Package** to build the self-extracting archive.

The Help button opens a knowledgebase article on the Sophos website.

5 Appendix: Create a package via the command line

Before using this section, read [Create a package via the graphical user interface](#) (page 6).

To run the Deployment Packager in command line mode, use the following format as a minimum:

DeploymentPackager -cli -mng yes -cidpath <CIDpath> -sfxpath <SFXpath> -crt R

where <CIDpath> is the path to the relevant central installation directory and <SFXpath> is the path of the output package.

The packager returns a value of zero when run successfully and non-zero for an error condition, together with a message to standard error method (stderr).

You can also use other command line qualifiers, as listed below.

Command-line options

-mng yes

Enable remote management

-scf

Install Sophos Client Firewall

-nac <NACURL>

Install Network Access Control, with <NACURL> as the NAC server address.

-sauonly

Include Sophos AutoUpdate only (chosen remote management, firewall and NAC components are downloaded from the update source). If this option is not selected, chosen components are included in the package.

-updpath <update_path>

Updating path.

-user <username>

-pwd <password>

Username and password. The packager obfuscates these in the package. However, if you are saving a Deployment Packager command line with clear username and password in a text or batch file, ensure that it is secure.

-opwd <obfuscated_password>

Obfuscated password. For information on how to obfuscate passwords, see knowledgebase article *Obfuscating the username and password* at

<http://www.sophos.com/support/knowledgebase/article/13094.html>

-s

Silent install

-ni

Non-interactive install

Other options

Any other options are packaged to be run with the installer setup file.

6 Technical support

You can find technical support for Sophos products in any of these ways:

- Visit the SophosTalk community at <http://community.sophos.com/> and search for other users who are experiencing the same problem.
- Visit the Sophos support knowledgebase at <http://www.sophos.com/support/>.
- Download the product documentation at <http://www.sophos.com/support/docs/>.
- Send an email to support@sophos.com, including your Sophos software version number(s), operating system(s) and patch level(s), and the text of any error messages.

7 Legal notices

Copyright © 2011 Sophos Limited. All rights reserved. No part of this publication may be reproduced, stored in a retrieval system, or transmitted, in any form or by any means, electronic, mechanical, photocopying, recording or otherwise unless you are either a valid licensee where the documentation can be reproduced in accordance with the licence terms or you otherwise have the prior permission in writing of the copyright owner.

Sophos and Sophos Anti-Virus are registered trademarks of Sophos Limited. All other product and company names mentioned are trademarks or registered trademarks of their respective owners.

OpenSSL cryptographic toolkit

The OpenSSL toolkit stays under a dual license, i.e. both the conditions of the OpenSSL License and the original SSLeay license apply to the toolkit. See below for the actual license texts. Actually both licenses are BSD-style Open Source licenses. In case of any license issues related to OpenSSL please contact openssl-core@openssl.org.

OpenSSL license

Copyright © 1998–2006 The OpenSSL Project. All rights reserved.

Redistribution and use in source and binary forms, with or without modification, are permitted provided that the following conditions are met:

1. Redistributions of source code must retain the above copyright notice, this list of conditions and the following disclaimer.
2. Redistributions in binary form must reproduce the above copyright notice, this list of conditions and the following disclaimer in the documentation and/or other materials provided with the distribution.
3. All advertising materials mentioning features or use of this software must display the following acknowledgment:

“This product includes software developed by the OpenSSL Project for use in the OpenSSL Toolkit. (<http://www.openssl.org/>)”

4. The names “OpenSSL Toolkit” and “OpenSSL Project” must not be used to endorse or promote products derived from this software without prior written permission. For written permission, please contact openssl-core@openssl.org.
5. Products derived from this software may not be called “OpenSSL” nor may “OpenSSL” appear in their names without prior written permission of the OpenSSL Project.
6. Redistributions of any form whatsoever must retain the following acknowledgment:

“This product includes software developed by the OpenSSL Project for use in the OpenSSL Toolkit (<http://www.openssl.org/>)”

THIS SOFTWARE IS PROVIDED BY THE OpenSSL PROJECT “AS IS” AND ANY EXPRESSED OR IMPLIED WARRANTIES, INCLUDING, BUT NOT LIMITED TO, THE IMPLIED WARRANTIES OF MERCHANTABILITY AND FITNESS FOR A PARTICULAR PURPOSE ARE DISCLAIMED. IN NO EVENT SHALL THE OpenSSL PROJECT OR ITS CONTRIBUTORS BE

LIABLE FOR ANY DIRECT, INDIRECT, INCIDENTAL, SPECIAL, EXEMPLARY, OR CONSEQUENTIAL DAMAGES (INCLUDING, BUT NOT LIMITED TO, PROCUREMENT OF SUBSTITUTE GOODS OR SERVICES; LOSS OF USE, DATA, OR PROFITS; OR BUSINESS INTERRUPTION) HOWEVER CAUSED AND ON ANY THEORY OF LIABILITY, WHETHER IN CONTRACT, STRICT LIABILITY, OR TORT (INCLUDING NEGLIGENCE OR OTHERWISE) ARISING IN ANY WAY OUT OF THE USE OF THIS SOFTWARE, EVEN IF ADVISED OF THE POSSIBILITY OF SUCH DAMAGE.

This product includes cryptographic software written by Eric Young (eay@cryptsoft.com). This product includes software written by Tim Hudson (tjh@cryptsoft.com).

Original SSLey license

Copyright © 1995–1998 Eric Young (eay@cryptsoft.com) All rights reserved.

This package is an SSL implementation written by Eric Young (eay@cryptsoft.com). The implementation was written so as to conform with Netscape's SSL.

This library is free for commercial and non-commercial use as long as the following conditions are adhered to. The following conditions apply to all code found in this distribution, be it the RC4, RSA, lhash, DES, etc., code; not just the SSL code. The SSL documentation included with this distribution is covered by the same copyright terms except that the holder is Tim Hudson (tjh@cryptsoft.com).

Copyright remains Eric Young's, and as such any Copyright notices in the code are not to be removed. If this package is used in a product, Eric Young should be given attribution as the author of the parts of the library used. This can be in the form of a textual message at program startup or in documentation (online or textual) provided with the package.

Redistribution and use in source and binary forms, with or without modification, are permitted provided that the following conditions are met:

1. Redistributions of source code must retain the copyright notice, this list of conditions and the following disclaimer.
2. Redistributions in binary form must reproduce the above copyright notice, this list of conditions and the following disclaimer in the documentation and/or other materials provided with the distribution.
3. All advertising materials mentioning features or use of this software must display the following acknowledgement:

“This product includes cryptographic software written by Eric Young (eay@cryptsoft.com)”

The word “cryptographic” can be left out if the routines from the library being used are not cryptographic related :-).

4. If you include any Windows specific code (or a derivative thereof) from the apps directory (application code) you must include an acknowledgement:

“This product includes software written by Tim Hudson (tjh@cryptsoft.com)”

THIS SOFTWARE IS PROVIDED BY ERIC YOUNG “AS IS” AND ANY EXPRESS OR IMPLIED WARRANTIES, INCLUDING, BUT NOT LIMITED TO, THE IMPLIED WARRANTIES OF

MERCHANTABILITY AND FITNESS FOR A PARTICULAR PURPOSE ARE DISCLAIMED. IN NO EVENT SHALL THE AUTHOR OR CONTRIBUTORS BE LIABLE FOR ANY DIRECT, INDIRECT, INCIDENTAL, SPECIAL, EXEMPLARY, OR CONSEQUENTIAL DAMAGES (INCLUDING, BUT NOT LIMITED TO, PROCUREMENT OF SUBSTITUTE GOODS OR SERVICES; LOSS OF USE, DATA, OR PROFITS; OR BUSINESS INTERRUPTION) HOWEVER CAUSED AND ON ANY THEORY OF LIABILITY, WHETHER IN CONTRACT, STRICT LIABILITY, OR TORT (INCLUDING NEGLIGENCE OR OTHERWISE) ARISING IN ANY WAY OUT OF THE USE OF THIS SOFTWARE, EVEN IF ADVISED OF THE POSSIBILITY OF SUCH DAMAGE.

The licence and distribution terms for any publically available version or derivative of this code cannot be changed. i.e. this code cannot simply be copied and put under another distribution licence [including the GNU Public Licence.]