

Sophos Enterprise Console Deployment Packager guide

Product version: 5.0

Document date: December 2011



Contents

1 About this guide.....	3
2 About the Deployment Packager tool.....	4
3 System requirements.....	5
4 Create a package via the graphical user interface.....	6
5 Appendix: Create a package via the command line.....	9
6 Technical support.....	11
7 Legal notices.....	12

1 About this guide

This guide describes how to use the free Sophos Deployment Packager tool. For information about how Managed Service Providers (MSPs) may use this tool, see the *Managed Service Provider Guide*.

It is assumed that you are familiar with Sophos Enterprise Console and Sophos Endpoint Security and Control.

Sophos documentation is published at <http://www.sophos.com/support/docs/>.

2 About the Deployment Packager tool

The Deployment Packager creates a single self-extracting archive file from a set of Sophos endpoint setup files, for installing Endpoint Security and Control on Windows endpoint computers. The packaged file includes configuration options such as silent/interactive installation, installation component choices, update path/credentials and endpoint group membership. Packages made with the Deployment Packager always attempt to remove other potentially-clashing antivirus/security software when installed. It may be necessary for you to produce several packages, each meeting the requirements of different endpoint types.

You can run the Deployment Packager tool through either its graphical user interface (GUI) or command-line interface (CLI).

- The GUI is easier for one-off deployments.
- The CLI is more versatile for repeated deployments.

A string to invoke the command line version with options can be stored in a text file, or regularly run from a scheduled batch file, ensuring that the installation packages are always up-to-date. So, if you are managing large numbers of computers where there is a need for frequent installation on endpoints, then the CLI is preferable.

Instructions for using the Deployment Packager via the command line can be found in [Appendix: Create a package via the command line](#) (page 9).

3 System requirements

The minimum requirements to run the Deployment Packager tool are as follows:

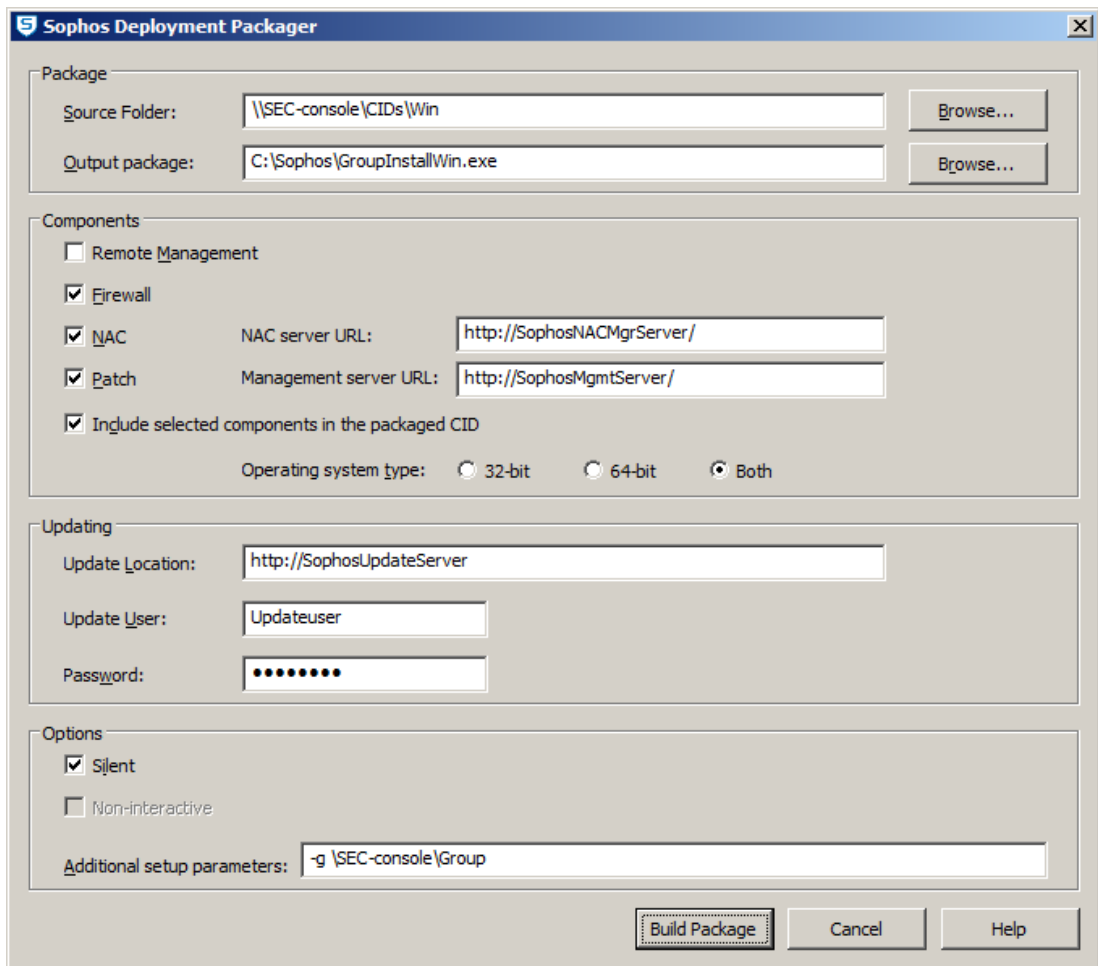
- Windows operating systems: see <http://www.sophos.com/products/enterprise/endpoint/security-and-control/management/sysreqs.html>
- Disk space: 1 GB
- Memory: 1 GB
- Processor: 2 GHz Pentium or equivalent

You should also be aware of system requirements for the packaged endpoint components. See <http://www.sophos.com/products/all-sysreqs.html>.

4 Create a package via the graphical user interface

1. To create a package via the user interface, run DeploymentPackager.exe.

The **Sophos Deployment Packager** dialog box is displayed.



2. In the **Package** panel, enter the following:
 - a) In **Source Folder**, specify the location of the central installation directory containing the endpoint software installation files. This may be a UNC pathname or a URL.
 - b) In **Output package**, specify the path for the output installer package. You can also specify a filename; if it is not supplied, the Deployment Packager will use a default filename.

3. In the **Components** panel, select from the following:

■ **Remote management**

This installs and enables the Sophos Remote Management System (RMS), which allows Enterprise Console to control Endpoint Security and Control. For Managed systems you must enable this component.

Note: When you select this option, endpoints obtain their updating path and credentials from Enterprise Console through RMS.

■ **Firewall**

This installs the Sophos Client Firewall.

Note: If you want to install this option, check endpoint system requirements at <http://www.sophos.com/products/all-sysreqs.html>.

■ **NAC**

This installs Sophos NAC (Network Access Control). If you select this option, you must also enter the address where the NAC Manager is installed. Example: <http://nameofserver> or <http://192.168.0.1>.

Note: It is recommended that you enter a fully qualified domain name for the NAC Manager server.

■ **Patch**

This installs Sophos Patch Agent. If you select this option, you must also enter the address where the Management Server is installed. Example: <http://nameofserver> or <http://192.168.0.1>.

Note: It is recommended that you enter a fully qualified domain name for the management server.

■ **Include selected components in the packaged CID**

This includes the chosen components in the deployment package. Otherwise, only Sophos AutoUpdate is included; the other components are downloaded from the update source.

Note: The endpoint installer is unable to use a proxy server. If the update location is accessed through a proxy server, then the required endpoint components must be included in the package.

■ **Operating system type**

Select the operating system architecture type. This option is only applicable if either NAC or Patch is being installed from packaged CID. If you choose **32-bit** or **64-bit** the package can be installed only on specific 32-bit or 64-bit operating systems. If you choose **Both** a single package is created which can be installed on both 32 and 64-bit operating systems, but the package size will be large.

Note: If you select **Remote management** and **Install selected components in the packaged CID**, all **Updating** details are obtained from Enterprise Console.

4. In the **Updating** panel, for indirectly-managed endpoint packages or where remote management is enabled but not included in the package, enter the update location and credentials. You may set ":<port number>" after an HTTP URL; if unset, this defaults to 80.

Note:

- Credentials are obfuscated in the package; however, accounts set up for endpoints to read update server locations should always be as restrictive as possible, allowing only read-only access.
 - Endpoints will attempt to use their system proxy settings only if set using the environmental variables `http_proxy` or `all_proxy`. Proxy settings in Windows Control Panel Internet Options or Internet Explorer are ignored. `_proxy` variable values take the format `_proxy=[protocol://][user:password@]host[:port]`, for example `http_proxy=http://user:password@proxy:8080`
5. In the **Options** panel, select options that determine how the installation program will run on endpoint computers.
 - **Silent**

The program will run in silent mode. If you select this, the **Non-interactive** option is automatically selected and grayed-out.
 - **Non-interactive**

The program runs in non-interactive mode.
 - **Additional setup parameters**

Use this edit box to specify endpoint setup installation options. Always specify group membership using the `-g` option, as shown in the screenshot above, so that each installer is specific to and sets up endpoints to be members of existing groups.

The packager does not check these options for errors.

For more details, see <http://www.sophos.com/support/knowledgebase/article/12570.html>.
 6. Click **Build Package** to build the self-extracting archive.

5 Appendix: Create a package via the command line

Before using this section, read [Create a package via the graphical user interface](#) (page 6).

To run the Deployment Packager in command line mode, use the following format as a minimum:

```
DeploymentPackager -cli -mng yes -cidpath <CIDpath> -sfxpath <SFXpath> -crt R
```

where **<CIDpath>** is the path to the relevant central installation directory and **<SFXpath>** is the path of the output package.

The packager returns a value of zero when run successfully and non-zero for an error condition, together with a message to standard error method (stderr).

You can also use other command line qualifiers, as listed below.

Command-line options

-mng yes

Enable remote management

-scf

Install Sophos Client Firewall

-nac <NAC Server URL>

Install Network Access Control with the NAC Manager address. Example: `http://192.168.0.1` or `http://nameofserver`.

Note: It is recommended that you enter a fully qualified domain name for the NAC Manager server.

-patch <Management Server URL>

Install Sophos Patch Agent with the Management Server address. Example: `http://192.168.0.1` or `http://nameofserver`.

Note: It is recommended that you enter a fully qualified domain name for the management server.

-sauonly

Include Sophos AutoUpdate only (chosen remote management, firewall and NAC components are downloaded from the update source). If this option is not selected, chosen components are included in the package.

-arch <32bit, 64bit>

Specify the architecture of the package you want to create, either 32-bit or 64-bit.

Note: This option is only applicable if either NAC or Patch is being installed from packaged CID. If you choose **32-bit** or **64-bit** the package can be installed only on specific 32-bit or 64-bit operating systems. If you do not specify architecture, a single package is created which can be installed on both 32 and 64-bit operating systems, but the package size will be large.

-upd <update_path>

Updating path.

-user <username>

-pwd <password>

Username and password. The packager obfuscates these in the package. However, if you are saving a Deployment Packager command line with clear username and password in a text or batch file, ensure that it is secure.

-opwd <obfuscated_password>

Obfuscated password. For information on how to obfuscate passwords, see Knowledge Base article *Obfuscating the username and password* at <http://www.sophos.com/support/knowledgebase/article/13094.html> .

-s

Silent install

-ni

Non-interactive install

Other options

Any other options are packaged to be run with the installer setup file.

6 Technical support

You can find technical support for Sophos products in any of these ways:

- Visit the SophosTalk community at <http://community.sophos.com/> and search for other users who are experiencing the same problem.
- Visit the Sophos support knowledgebase at <http://www.sophos.com/support/>.
- Download the product documentation at <http://www.sophos.com/support/docs/>.
- Send an email to support@sophos.com, including your Sophos software version number(s), operating system(s) and patch level(s), and the text of any error messages.

7 Legal notices

Copyright © 2012 Sophos Limited. All rights reserved. No part of this publication may be reproduced, stored in a retrieval system, or transmitted, in any form or by any means, electronic, mechanical, photocopying, recording or otherwise unless you are either a valid licensee where the documentation can be reproduced in accordance with the license terms or you otherwise have the prior permission in writing of the copyright owner.

Sophos, Sophos Anti-Virus and SafeGuard are registered trademarks of Sophos Limited, Sophos Group and Utimaco Safeware AG, as applicable. All other product and company names mentioned are trademarks or registered trademarks of their respective owners.