

SOPHOS



sophos **nac**

ADVANCED

Moving SQL Servers



Copyright © 2010 Sophos Limited. All rights reserved. No part of this publication may be reproduced, stored in retrieval system, or transmitted, in any form or by any means electronic, mechanical, photocopying, recording or otherwise unless you are either a valid licensee where the documentation can be reproduced in accordance with the licence terms or you otherwise have the prior permission in writing of the copyright owner.

Sophos and Sophos Anti-Virus are registered trademarks of Sophos Limited. All other product and company names are trademarks or registered trademarks of their respective owners.

Document version 3.2
Published December 2010

Table of Contents

Moving SQL Servers with Sophos NAC Advanced	4
Moving Only the SQL Server	4
Moving Both the Application Server and SQL Server	6
SQL Server Detach/Attach Procedure	7

Moving SQL Servers with Sophos NAC Advanced

At some point, it may become necessary to move the production Sophos NAC SQL server (Sophos Compliance Databases) to another SQL server because of hardware problems or upgrades. Additionally, you may have detailed policy data set up in a test environment that is necessary to keep when moving the Sophos Compliance Databases and Sophos Compliance Application Server into a production environment. This document addresses the steps that are necessary to complete these tasks.

These procedures should be performed during a maintenance window when users will not be using the system. This document assumes that the Compliance Databases and the Compliance Application are on separate servers. An application outage for the Sophos Compliance Manager should be planned for this task.

Moving Only the SQL Server

The following steps outline the process necessary to move the Compliance Databases from a test environment to a production environment while keeping the same Compliance Application Server.

Important: Sophos recommends that you back up your SQL server prior to performing these steps to ensure that no data is lost. The following procedure should be performed during a maintenance window when users will not be using the system. This document assumes that the Compliance Databases and the Compliance Application are on separate servers.

1. From the Compliance Application Server, log on to the Compliance Manager, go to the **Configure System > Server Key** area, export the public/private key pair, and save the key pair to an external location.
2. Install the **new** Compliance Databases on the **new** SQL server using the **SophosComplianceManagerSetup.msi** file. (This msi file is run immediately after the sfx file has been extracted.) Then, from the installation options, select the **Sophos Compliance Database Server Only** option. After the installation is complete, open SQL Enterprise Manager on the **new** SQL server and delete all Compliance Databases, which include: AlertStore, AuditStore, GeneralStore, PolicyStore, ReportStore, ReportStoreCache, ReportStoreWH, and SecurityStore. For more information, see [SQL Server Detach/Attach Procedure, page 9 \(step 8\)](#).
3. Put the existing Compliance Application Server into Maintenance Mode so that the SQL connections are suspended and Compliance Agents do not receive errors when trying to register, retrieve the policy, or report. To do this, run a command prompt, go to the following directory "C:\Program Files\Sophos\NAC\Support Tools\", and then run the following command: **maintmode.exe /start**
4. From the **old** SQL server, open SQL Enterprise Manager, and detach all Compliance Databases, which include: AlertStore, AuditStore, GeneralStore, PolicyStore, ReportStore, ReportStoreCache, ReportStoreWH, and SecurityStore. Then, copy the MDF and LDF files to the **new** SQL server in the following location "C:\Program Files\Microsoft SQL Server\MSSQL\Data", or wherever the default SQL database location is set on this server. For more information, see [SQL Server Detach/Attach Procedure, page 7 \(step 1\)](#).
5. From the **new** SQL server, open SQL Enterprise Manager, and attach all Compliance Databases that were detached from the **old** SQL server in step 4. For more information, see [SQL Server Detach/Attach Procedure, page 8 \(step 3\)](#).

6. Uninstall the Compliance Application Server using **Control Panel > Add/Remove Programs**.
7. Re-install the Compliance Application Server using the **SophosComplianceManagerSetup.msi** file. (This msi file is run immediately after the sfx file has been extracted.) Then, from the installation options, select the **Compliance Application Server and RADIUS Enforcer** option, and point it to the **new** SQL server.
8. After re-installing the Compliance Application Server, log on to the Compliance Manager, go to the **Configure System > Server Key** area, and import the public/private key pair that was saved in step 1.
9. After confirming that the new installation was a success, uninstall the **old** Compliance Databases Server using **Control Panel > Add/Remove Programs**, and delete the Compliance Databases (or keep them as a backup). For more information, see [SQL Server Detach/Attach Procedure, page 9 \(step 8\)](#).

Moving Both the Application Server and SQL Server

The following steps outline the process necessary to move both the Compliance Application Server and the Compliance Databases to two new servers.

Important: Sophos recommends that you back up your SQL server prior to performing these steps to ensure that no data is lost. The following procedure should be performed during a maintenance window when users will not be using the system. This document assumes that the Compliance Databases and the Compliance Application are on separate servers.

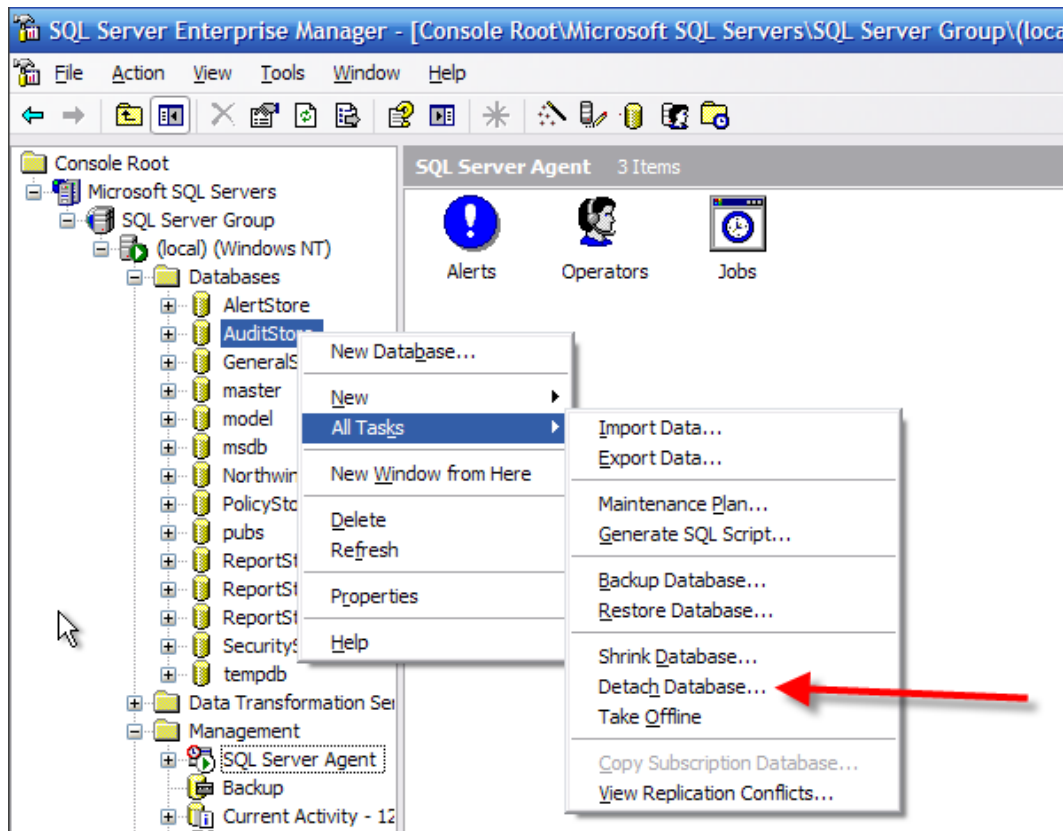
1. From the Compliance Application Server, log on to the Compliance Manager, go to the **Configure System > Server Key** area, export the public/private key pair, and save the key pair to an external location
2. Install the **new** Compliance Databases on the **new** SQL server using the **SophosComplianceManagerSetup.msi** file. (This msi file is run immediately after the sfx file has been extracted.) Then, from the installation options, select the **Sophos Compliance Database Server Only** option. After the installation is complete, open SQL Enterprise Manager on the **new** SQL server and delete all Compliance Databases, which include: AlertStore, AuditStore, GeneralStore, PolicyStore, ReportStore, ReportStoreCache, ReportStoreWH, and SecurityStore. For more information, see [SQL Server Detach/Attach Procedure, page 9 \(step 8\)](#).
3. Put the existing Compliance Application Server into Maintenance Mode so that the SQL connections are suspended and Compliance Agents do not receive errors when trying to register, retrieve the policy, or report. To do this, run a command prompt, go to the following directory "C:\Program Files\Sophos\NAC\Support Tools\", and then run the following command: **maintmode.exe /start**
4. From the **old** SQL server, open SQL Enterprise Manager, and detach all Compliance Databases, which include: AlertStore, AuditStore, GeneralStore, PolicyStore, ReportStore, ReportStoreCache, ReportStoreWH, and SecurityStore. Then, copy the MDF and LDF files to the **new** SQL server in the following location "C:\Program Files\Microsoft SQL Server\MSSQL\Data", or wherever the default SQL database location is set on this server. For more information, see [SQL Server Detach/Attach Procedure, page 7 \(step 1\)](#).
5. From the **new** SQL server, open SQL Enterprise Manager, and attach all Compliance Databases that were detached from the **old** SQL server in step 4. For more information, see [SQL Server Detach/Attach Procedure, page 8 \(step 3\)](#).
6. Install the **new** Compliance Application Server using the **SophosComplianceManagerSetup.msi** file. (This msi file is run immediately after the sfx file has been extracted.) Then, from the installation options, select the **Compliance Application Server and RADIUS Enforcer** option, and point it to the **new** SQL server.
7. After installing the Compliance Application Server, log on to the Compliance Manager, go to the **Configure System > Server Key** area, and import the public/private key pair that was saved in step 1.
8. After confirming that the new installation was a success, uninstall the **old** Compliance Application Server and the **old** Compliance Databases Server using **Control Panel > Add/Remove Programs**, and delete the Compliance Databases (or keep them as a backup). For more information, see [SQL Server Detach/Attach Procedure, page 9 \(step 8\)](#).

SQL Server Detach/Attach Procedure

The detach/attach procedure defined in the tasks above can be accomplished through the SQL Enterprise Manager.

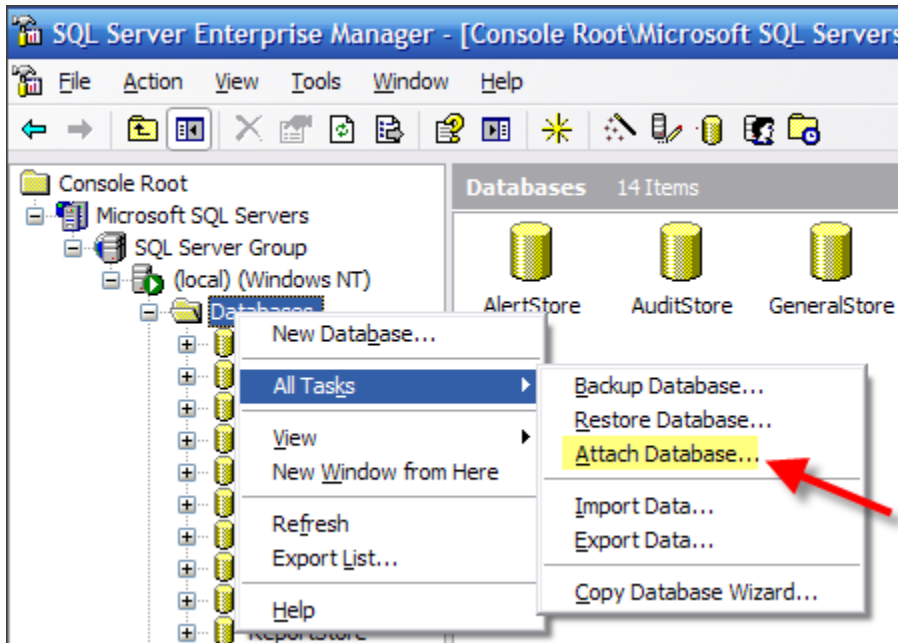
Important: If this server has just been installed with the Compliance Databases and you want to migrate the old databases to the new server, run step 9 first to remove the newly created databases before running step 1.

1. To detach a database from the old SQL server, open SQL Enterprise Manager, right-click the database you want to detach, and select **All Tasks > Detach Database**.

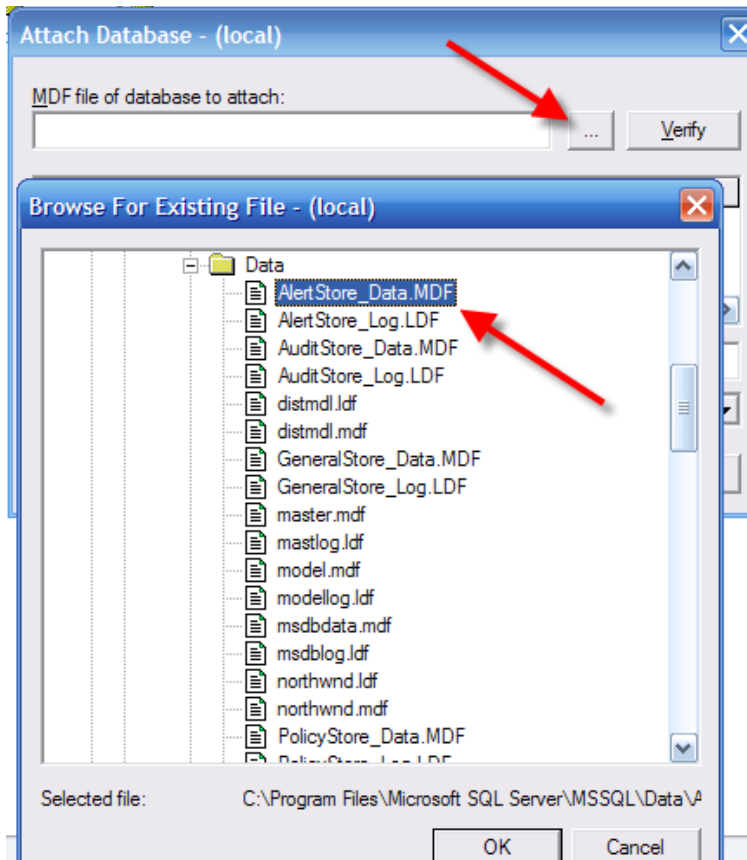


2. Repeat step 1 as necessary to detach all SQL server databases.

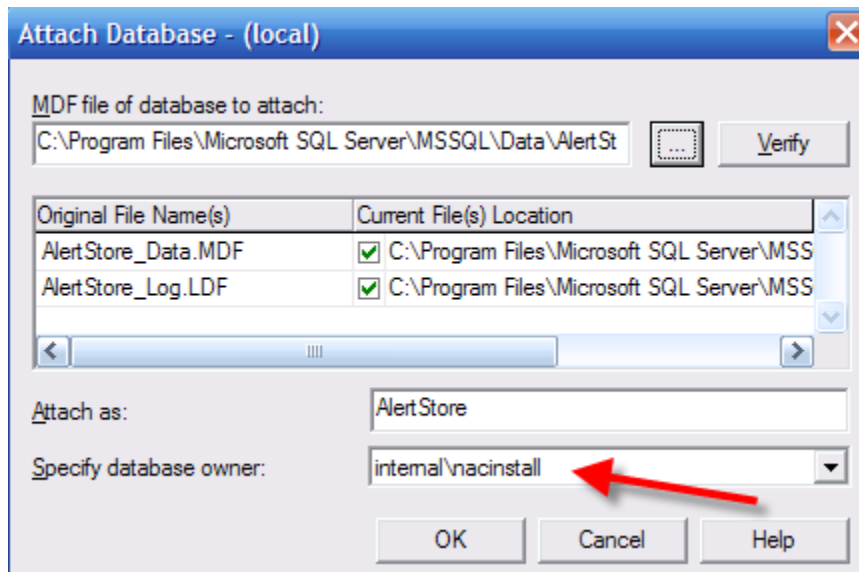
- To attach a database on the new SQL server, open SQL Enterprise Manager, right-click the **Databases** folder, and select **All Tasks > Attach Database**.



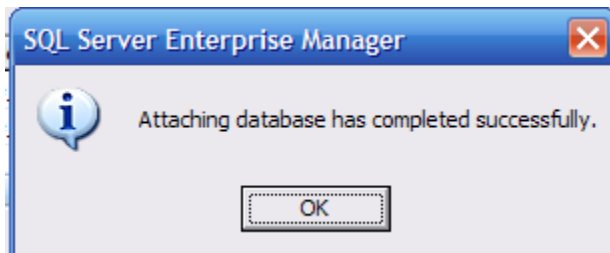
- Click the **ellipsis** button to browse for the database, scroll down to C:\Program Files\Microsoft SQL Server\MSSQL\Data, select the newly copied MDF files, and click **OK**.



- The log file is automatically located. You must confirm or specify the new database owner. For each of the SQL databases, specify the NAC account that you chose when you installed the Compliance Databases and Compliance Application Server as the database owner, and click **OK**.



- A dialog box displays confirming that the database was successfully attached. Click **OK**.



- Repeat steps 4-7 as necessary to successfully attach all SQL server databases.
- To delete the old databases and their corresponding LDF files on the Compliance Databases server, open SQL Enterprise Manager, right-click each of the databases, and select **Delete** from the list of options for each of the following databases: AlertStore, AuditStore, GeneralStore, PolicyStore, ReportStore, ReportStoreCache, ReportStoreWH, and SecurityStore.

Important: The deletion of the databases should only be done on the **old** Compliance Databases SQL server **after** the databases have been backed up, detached, copied, and successfully attached to the new SQL server.

