

# SOPHOS



## sophos **anti-virus**

### Startup guide

Sophos Anti-Virus for NetWare

Document date: April 2006



## About this guide

This guide tells you how to

- install Sophos Anti-Virus on a NetWare server
- scan the server for viruses
- keep Sophos Anti-Virus up to date.

You can find details of all other configuration options in the *Sophos Anti-Virus NetWare user manual* on the Sophos website or the **Sophos Anti-Virus Supplementary CD**.

❗ For information on *automatically* installing and updating Sophos Anti-Virus, see one of the following documents:

- If the network uses *Microsoft* networking, see the *Sophos Anti-Virus and Sophos Client Firewall network startup guide* on the Sophos website or the **Sophos Network Install CD**.
- If the network uses *NDS* networking, see the *Sophos Anti-Virus and Sophos Client Firewall network startup guide: NetWare edition* on the Sophos website or the **Sophos Network Install CD**.

## **Contents**

|  |    |
|--|----|
| 1 Installing Sophos Anti-Virus         | 3  |
| 2 Scanning the server for viruses      | 8  |
| 3 Keeping Sophos Anti-Virus up to date | 10 |
| 4 Technical support                    | 13 |

# 1 Installing Sophos Anti-Virus

- ❗ This guide applies only to versions of NetWare supported by Novell, up to version 6.5 inclusive. If you are using another version, contact Sophos [technical support](#) before installation.
- ❗ You must uninstall any anti-virus software, including any earlier version of Sophos Anti-Virus, before installing Sophos Anti-Virus.

Before you begin, make a note of the name of the NetWare server.

Installing and setting up Sophos Anti-Virus on the server involves four steps:

- Install Sophos Anti-Virus (section 1.1).
- Add the latest virus identity files (section 1.2).
- Load Sophos Anti-Virus for the first time (section 1.3).
- Enable central reporting (section 1.4).

## 1.1 Install Sophos Anti-Virus on the server

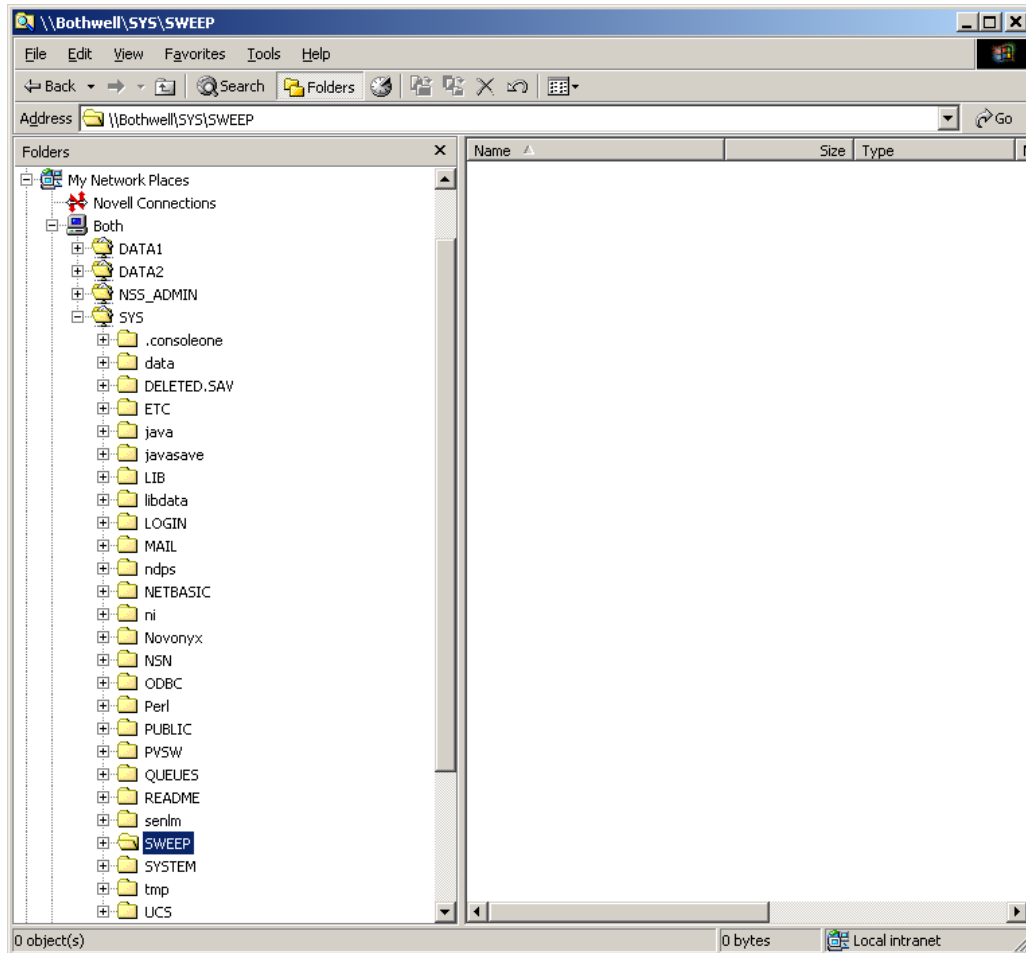
You install Sophos Anti-Virus on the server **from a Windows workstation with an internet connection**. We recommend that you ensure the workstation is virus-free before you start.

1. At the workstation, log on to the server using an account with Novell ADMIN permissions.

If you have already downloaded and unzipped the Sophos Anti-Virus for NetWare files from the Sophos website, go to step 4.

2. Insert the **Sophos Anti-Virus Supplementary CD** in the CD drive.
3. Using Windows Explorer, find the NETWARE folder on the CD.
4. Select all the files. Right-click the selection to display a menu. Select **Copy**.

5. In **My Network Places** (Windows Me/2000/XP) or **Network Neighborhood** (Windows 95/98/NT), select the server and locate the SYS volume. On this volume, create a directory called SWEEP, and select it. On the **Edit** menu, click **Paste**.



The Sophos Anti-Virus for NetWare files are copied to the directory.

You have installed Sophos Anti-Virus. Now add the latest virus identity files (section 1.2).

## 1.2 Add the latest virus identity files (IDEs)

This section describes how to download IDEs from the Sophos website.

- ❓ A **virus identity file (IDE)** enables Sophos Anti-Virus to detect a specific virus. You need IDEs to protect your computer against viruses discovered since your version of Sophos Anti-Virus was compiled.

Download IDEs as follows:

1. At the same workstation you used in [section 1.1](#), log on to the server using an account with Novell ADMIN permissions.
  2. Go to the IDE download page of the Sophos website ([www.sophos.com/downloads/ide](http://www.sophos.com/downloads/ide)).
  3. Download the compressed IDEs file for your version of Sophos Anti-Virus.
  4. Extract the file to \\[servername]\SYS\SWEEP where [servername] is the name of the NetWare server.
- 💡 If you prefer, scroll down the page and download the IDEs one by one, to the location above.
  - 💡 Help with downloading IDEs is available in the Sophos support knowledgebase ([www.sophos.com/support/knowledgebase](http://www.sophos.com/support/knowledgebase)). If you use Internet Explorer 5.0, read the article on why IDEs may acquire an extra file extension when you download them.

If you need further help with downloading IDEs, please contact Sophos [technical support](#).

You have added the latest IDEs. Now load Sophos Anti-Virus for the first time (section 1.3).

## 1.3 Load Sophos Anti-Virus for the first time

1. At the server console, or using RCONSOLE from a workstation, add the default installation directory to the search path:

```
SEARCH ADD SYS:\SWEEP\
```

Then type

```
LOAD SWEEP
```

- 💡 Sophos recommends that you add these commands in the same order to the AUTOEXEC.NCF file, so that Sophos Anti-Virus will be restarted if the server is rebooted.

2. The first time you load Sophos Anti-Virus, it prompts you to enter Administrator details. Press any key.

```
SWEEP will now configure itself to
use Netware Directory Services (NDS).
You will need to log in to the
network as a user with administrator
privileges in order for SWEEP to do
this.

Press any key to continue.
```

3. At the login prompt, type the fully qualified distinguished name of an Administrator, and press Return, for example

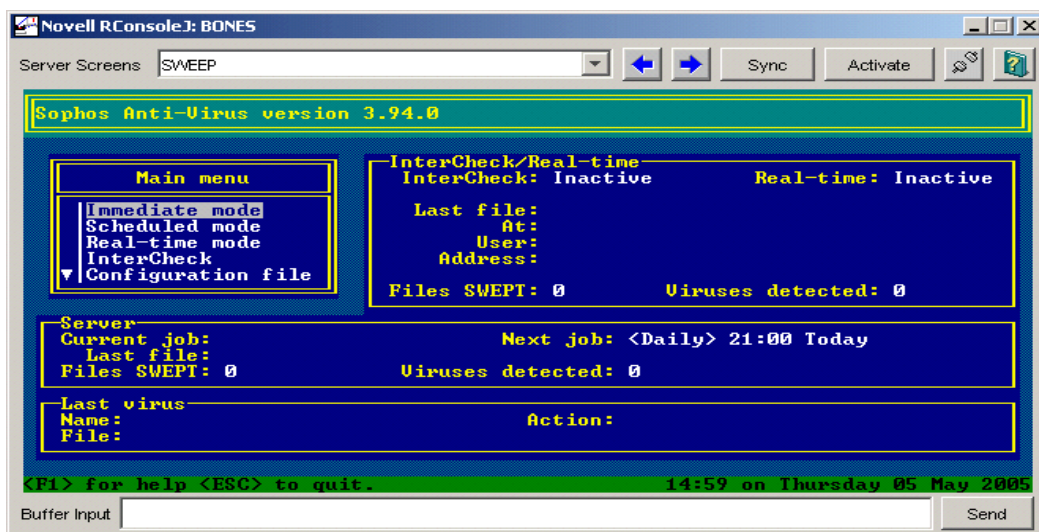
```
Enter administrator complete name (e.g. CN=Admin.O=Company)
cn=admin.o=sophos
```

4. Type the Administrator password and press Return.

```
Enter administrator password
*****
```

Make a note of the fully qualified distinguished name of the Administrator and (in a secure place) the password. Sophos Anti-Virus will log in as this user every time it is started, enabling it to see the complete eDirectory tree.

The **Sophos Anti-Virus** screen is displayed.



You have loaded Sophos Anti-Virus.

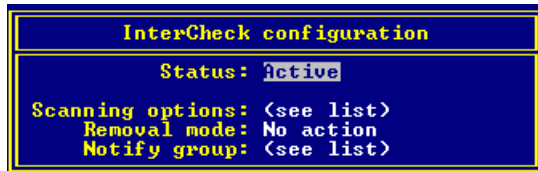
Now enable central reporting (section 1.4).

## 1.4 Enable central reporting

If your workstations are in a Windows domain, it is not necessary to enable central reporting on the NetWare server.

Workstations running Sophos Anti-Virus can report viruses to a central location on the server. You enable central reporting by activating the InterCheck Server.

1. In the **Sophos Anti-Virus** screen, on the **Main** menu, press the down arrow key twice to select **InterCheck**. Press Return to display the **InterCheck configuration** screen.



2. Press Return. Set **Status** to **Active** and press Return. Press 'Esc' to return to the **Main** menu.

You have enabled central reporting and completed the installation of Sophos Anti-Virus on the server.

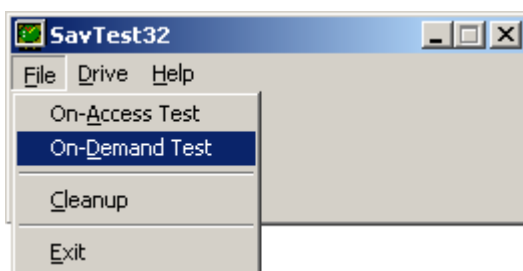
The installation of Sophos Anti-Virus on the server will update automatically as soon as an updated version of the Sophos Anti-Virus for NetWare files is placed on the server.

Scanning the server for viruses is described in [section 2](#).

## 2 Scanning the server for viruses

This section describes how to scan the contents of the server for viruses. It also describes how to test scanning with the SavTest32 utility. SavTest32 enables you to create a non-viral test file on your server.

1. At a workstation on the network, log on with create and write access rights to the directory on the server where the test will be run.
2. Insert the **Sophos Anti-Virus Supplementary CD** in the CD drive.
3. From the **Start** menu, open a **Run** dialog box. Click **Browse** and find the **TOOLS** folder on the CD. Double-click savtst32.exe.
4. In the **SavTest32** window, on the **Drive** menu, click **Select**. In the **Save As** dialog box, select the drive mapped to the server volume where you wish to place the test file.
5. On the **File** menu, click **On-Demand Test**.



6. SavTest32 creates a file (Eicar) that simulates a virus. You are prompted to run an immediate scan.

At the server console, or using RCONSOLE from a workstation, switch to the **Sophos Anti-Virus** screen.

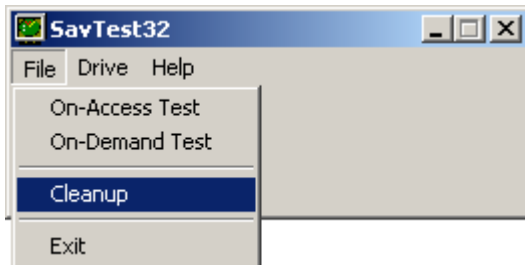
7. On the **Main** menu, select **Immediate mode** and press Return to display the **Immediate mode** menu.



8. Select **Start** and press Return to start the scan. The results of the scan appear in the **Server** and **Last virus** boxes of the **Sophos Anti-Virus** screen. Sophos Anti-Virus reports a virus find on the server.

```
Last virus
Name: EICAR-AU-Test          Action: No action
File: SYS:/EICAR.COM
```

9. If Sophos Anti-Virus finds a virus other than EICAR, search for it on the Sophos website ([www.sophos.com/virusinfo/analyses/](http://www.sophos.com/virusinfo/analyses/)).
10. **At the workstation**, in the **SavTest32** window, on the **File** menu, click **Cleanup** to delete the test file. Exit from SavTest32.



If Sophos Anti-Virus fails to detect the test file, contact Sophos [technical support](#).

## 3 Keeping Sophos Anti-Virus up to date

You must update Sophos Anti-Virus regularly to enable it to detect all the latest viruses. Do this

- each month, when the new version of Sophos Anti-Virus is released (section 3.1)
- whenever a significant new virus that puts your computer at risk is released (section 3.2).

### 3.1 To update Sophos Anti-Virus each month

A new version of Sophos Anti-Virus is released each month. To find out when, go to the Sophos Anti-Virus release dates page of the Sophos website ([www.sophos.com/downloads/release\\_dates/](http://www.sophos.com/downloads/release_dates/)).

Carry out the following steps as soon as the new version is released:

- Replace out-of-date virus identity files (IDEs) with the latest ones from the Sophos website (section 3.1.1).
- Update the NetWare files (section 3.1.2).

#### 3.1.1 Replace the out-of-date IDEs

- ?** A **virus identity file (IDE)** enables Sophos Anti-Virus to detect a specific virus. You need IDEs to protect your computer against viruses discovered since your version of Sophos Anti-Virus was compiled.

Replace IDEs as follows:

1. At any Windows workstation with an internet connection, log on to the server using an account with Novell ADMIN permissions.
2. In Windows Explorer, use **My Network Places** (Windows Me/2000/XP) or **Network Neighborhood** (Windows 95/98/NT) to locate \\[servername]\SYS\SWEEP where [servername] is the name of the NetWare server, and open it. Delete any \*.ide and compressed IDEs files in the SWEEP directory.
3. Go to the IDE download page of the Sophos website ([www.sophos.com/downloads/ide](http://www.sophos.com/downloads/ide)).
4. Download the compressed IDEs file for the new version of Sophos Anti-Virus.

5. Extract the IDEs to \\[servername]\SYS\SWEEP where [servername] is the name of the NetWare server.

- 💡 If you prefer, scroll down the page and download the IDEs one by one, to the location above.
- 💡 Help with downloading IDEs is available in the Sophos support knowledgebase ([www.sophos.com/support/knowledgebase](http://www.sophos.com/support/knowledgebase)). If you use Internet Explorer 5.0, read the article on why IDEs may acquire an extra file extension when you download them.

If you need further help with downloading IDEs, please contact Sophos [technical support](#).

Now update the NetWare files on the server (section 3.1.2).

### 3.1.2 Update the NetWare files

This section assumes you have set up auto-updating of Sophos Anti-Virus on the server, as described in [section 1.4](#). Update the NetWare Sophos Anti-Virus files as follows.


1. At the same workstation you used in section 3.1.1, log on to the server using an account with Novell ADMIN permissions.
2. Go to the Sophos website product downloads page ([www.sophos.com/support/updates](http://www.sophos.com/support/updates)).
3. Download the compressed file for Sophos Anti-Virus for NetWare.
4. Extract the Sophos Anti-Virus for NetWare files to \\[servername]\SYS\SWEEP\NLMINST where [servername] is the name of the NetWare server.

When Sophos Anti-Virus detects the new Sophos Anti-Virus for NetWare files, it unloads the current SWEEP.NLM and loads the new version. You can use RCONSOLE to view this process.

You have finished the monthly update of Sophos Anti-Virus.

### 3.2 To update Sophos Anti-Virus whenever a significant new virus is discovered

This type of update is carried out between major monthly updates of Sophos Anti-Virus. Whenever there is a **significant** new virus threat, such as a fast-spreading email worm, you must download the virus identity file (IDE) for it from the Sophos website.

 To receive email notifications about IDEs and other alerts, register at [www.sophos.com/virusinfo/notifications](http://www.sophos.com/virusinfo/notifications).

1. At any Windows workstation with an internet connection, log on to the server using an account with Novell ADMIN permissions.
2. Go to the IDE download page of the Sophos website ([www.sophos.com/downloads/ide](http://www.sophos.com/downloads/ide)). You see a list of the latest IDEs.
3. Scroll down the web page and click the name of the IDE you want to download. Save it to \\[servername]\SYS\SWEEP where [servername] is the name of the NetWare server.
4. Using RCONSOLE from a workstation, type

```
UNLOAD SWEEP
```

```
LOAD SWEEP
```

## Technical support

For technical support, visit

[www.sophos.com/support](http://www.sophos.com/support)

If you contact technical support, provide as much information as possible, including Sophos software version number(s), operating system(s) and patch level(s), and the exact text of any error messages.

Copyright 2005–2006 Sophos Group. All rights reserved. No part of this publication may be reproduced, stored in a retrieval system, or transmitted, in any form or by any means, electronic, mechanical, photocopying, recording or otherwise unless you are either a valid licensee where the documentation can be reproduced in accordance with the licence terms or you otherwise have the prior permission in writing of the copyright owner.

Sophos and Sophos Anti-Virus are registered trademarks of Sophos Plc and Sophos Group. All other product and company names mentioned are trademarks or registered trademarks of their respective owners.