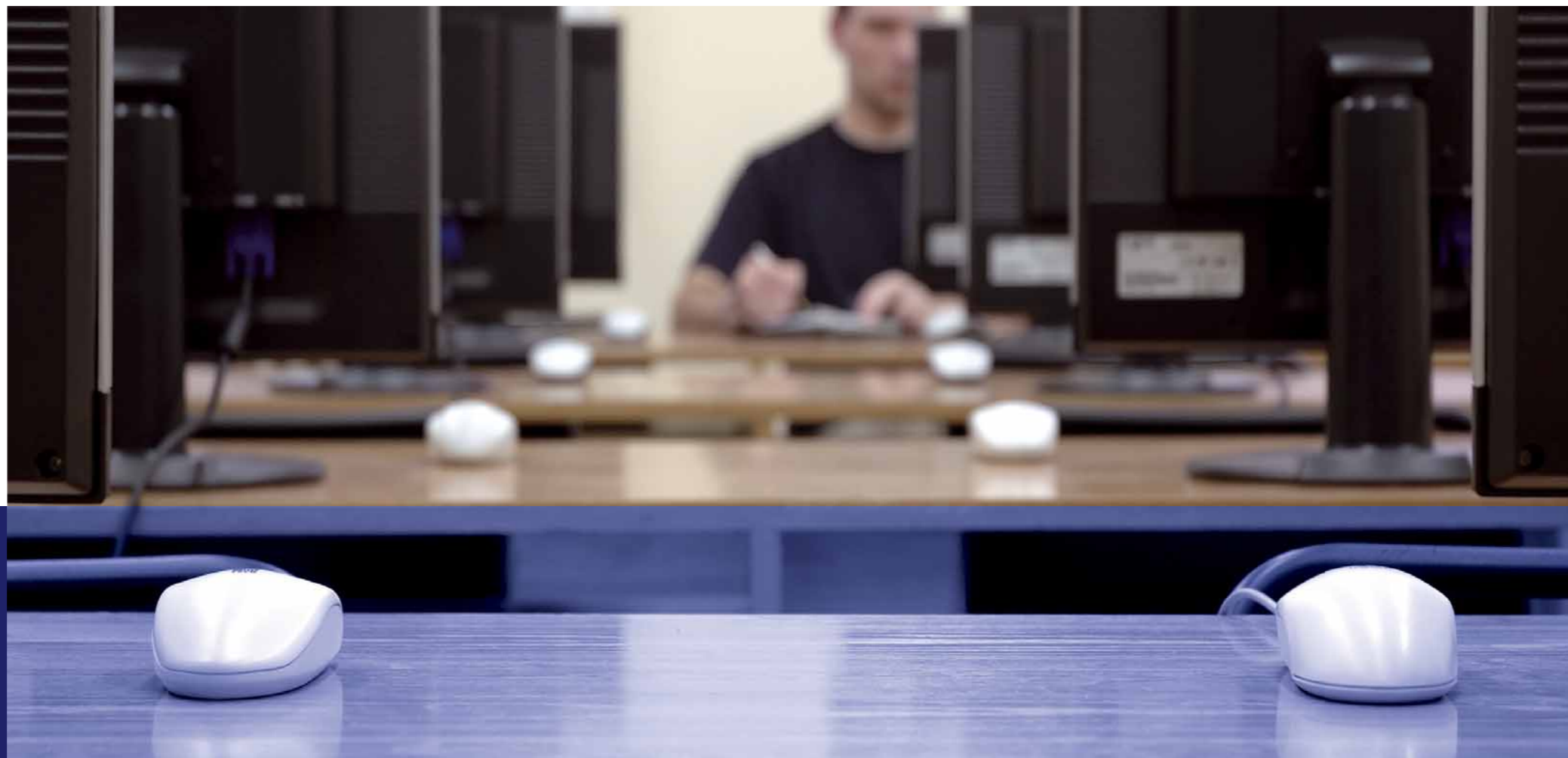




Sophos Endpoint Security

Integrated threat protection,
engineered to reduce complexity and cost



BUSINESS CHALLENGE

New security threats emerge every day. Not only is this malware more complex – blending techniques and spreading ever faster – but the emergence of new threats, like spyware and adware, make it even harder for you to keep your organization protected.

IT requirements are also changing. There's a growing need for internet and email access outside the controlled environment of a local area network. Wireless networks, PDAs, laptops and USB storage devices are increasingly freeing employees to work remotely. But with this freedom comes risk. Mobile computers that are not effectively protected can carry unknown threats into the corporate network.

Securing your business is a constantly evolving and complex task, making the creation and enforcement of robust security policies paramount. To ensure business continuity you need to implement and control multiple security technologies, protecting every point on your network. The challenge of security management often takes up an unnecessary amount of time, IT budget and resource.

THE SOPHOS INTEGRATED SOLUTION

At Sophos, we believe in simplifying complex tasks. We give you the best protection available with powerful insight and control of security threats from a single console. Unlike other vendors' products, we engineer solutions to reduce complexity and cost.

Sophos Endpoint Security makes securing your business against known and unknown threats easy. With our award-winning technologies and integrated protection against viruses, spyware, adware, potentially unwanted applications (PUAs) and hackers, you no longer need to manage multiple products to stop different threats.

Straightforward, centralized management of our anti-malware software and client firewall gives you comprehensive control across your entire network from a single console. Allowing powerful, enforceable policy-based security management, Sophos Endpoint Security builds on our 20 years' experience to deliver the scalable, integrated protection you need from a vendor you can trust – all backed up with Sophos's expert support.

The fastest expert response

SophosLabs™ responded quicker to the top five virus outbreaks in 2005 than any of our major competitors. Only Sophos has combined virus, spyware and spam analysis and business-focused 24/7 support.

See www.sophos.com/fastest

Spend less time managing your protection

- » Manage and control protection on tens of thousands of computers with powerful but easy-to-use software
- » Control applications that can adversely impact the network and user productivity, including VoIP and Instant Messaging
- » Eliminate multiple known and unknown threats with a single, centralized solution
- » Ensure proactive, zero day protection, prevent intrusion and proactively stop application hijacking and impersonation
- » Rapidly create and update security policies, and deploy them across multiple groups simultaneously
- » Receive and centrally deploy the smallest, fastest automatic updates as frequently as every five minutes
- » Protect all your platforms including Windows, Windows Mobile, Macintosh, Linux, NetWare, UNIX and NetApp Storage Systems
- » Remotely detect and cleanup viruses, spyware, Trojans and PUAs in a couple of clicks
- » Quickly deploy protection with flexible and efficient computer discovery, by using built-in search, Microsoft Active Directory data, or search by IP subnet ranges
- » Focus instantly on vulnerable computers to check compliance, update policies and clean up threats
- » Create a wide range of customized, graphical reports on virus alerts, infections and status of protection



FOCUSING ON YOUR NEEDS

Sophos Endpoint Security gives you the features and you get the benefits fast – delivering truly low total cost of ownership.

Single, scalable console for multiple security technologies

Powerful and scalable, Sophos Enterprise Console™ is uniquely engineered to deliver easy-to-use policy-based management of your endpoint security. Centralized management and administration of Sophos Anti-Virus® and Sophos Client Firewall™ across tens of thousands of computers is integrated into a single console, reducing the complexity of everyday tasks like discovering computers, setting and updating policies, and checking compliance.

Zero day protection and intrusion prevention

The Sophos Client Firewall is tightly integrated with Sophos Anti-Virus, and provides proactive zero day protection, closing all inactive ports and stopping known and unknown threats like internet worms before they reach the targeted computer. It also prevents application hijacking and impersonation, and uses stealth mode to prevent computers responding and falling victim to hacker attacks.

Powerful, rapidly enforced policy-based management

Sophos ActivePolicies™ takes the pain out of creating and changing policies for dealing with malware, firewall actions and updating criteria, by allowing deployment across multiple groups simultaneously. This means you can lock down the network immediately to isolate potentially compromised endpoints. Smart Views similarly makes it easy to check for policy compliance, enabling you to focus on vulnerable computers instantly so you can update policies and clean up threats. You can easily find computers on the network using the built-in network find, Microsoft Active Directory or search by IP subnet ranges.

Proactive malware prevention for all your platforms

Sophos Anti-Virus protects all your platforms including Windows, Macintosh, Linux, NetWare, UNIX and NetApp Storage Systems. Behavioral Genotype® Protection blocks malicious code before it executes, and Genotype technology proactively protects against unknown threats before specific, signature-based protection is released. System impact is minimized with high performance scanning using our unique Decision Caching™ technology, which scans only files that have changed.

Remote clean-up or authorization in a couple of clicks

Clean-up and repair are managed centrally from Enterprise Console. With a couple of clicks you can completely remove all malware and disinfect endpoints in a single, simple operation. Registry entries, running processes, and even files on disk are removed if they are part of the infection. You can also centrally authorize or remove PUAs, such as adware, that are not malicious, but may not be appropriate for typical business environments.

Protection for your mobile devices

You can also protect pocket PCs and phones based on Windows Mobile from mobile viruses and spyware. Sophos Mobile Security blocks and disinfects malware – and a configuration tool simplifies the creation and lockdown of company-wide security policies for mobile devices.

The fastest, smallest automatic updates

When new threats appear, highly skilled analysts at SophosLabs, our global network of threat analysis centers, respond rapidly with signature-based protection. The industry's smallest, most rapidly issued protection is automatically updated as frequently as every five minutes across more than 20 platforms, and is deployed across your network at pre-set times or on demand.

Optional control of applications

With Sophos Anti-Virus you can optionally authorize or block legitimate consumer applications that could undermine productivity and network performance, including VoIP, Instant Messaging and P2P file-sharing applications.

Technology bytes

ActivePolicies™ lets you create a new security policy once and then deploy it across multiple groups simultaneously

Application Control allows you to selectively authorize or block legitimate consumer applications that adversely impact network bandwidth, system availability, and user productivity

Behavioral Genotype® Protection delivers the benefits of a Host Intrusion Protection System (HIPS), guarding against unknown threats by analyzing behavior before code executes

Centralized cleanup lets you deal with malware and PUAs remotely from a central location, saving time and cost

Checksumming in Sophos Client Firewall prevents application hijacking and impersonation by spyware and other malware

Cisco Network Admission Control (NAC) integration helps deny access to network resources when anti-malware protection is not up to date

Decision Caching™ provides performance-enhanced on-access scans by ensuring that only those files that have changed are scanned

Genotype® technology provides proactive protection from new variants of virus and spam campaign families, even before specific, signature-based protection becomes available

Smart Views enables you to instantly focus on vulnerable computers – including remote computers – so you can check compliance, update policies and clean up threats

Sophos AutoUpdate™ technology offers failsafe updating and can throttle bandwidth when updating over low-speed network connections

SQL database support caters for the increased data storage requirements of even the largest network, while the built-in MSDE database will satisfy most organizations' requirements

Stealth mode in the Sophos Client Firewall prevents computers responding and falling victim to hacker attacks

SOPHOS ENDPOINT SECURITY

integrated protection from a vendor you can trust

Enterprise Console

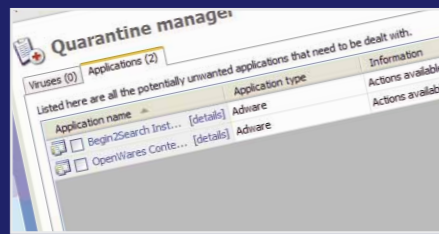
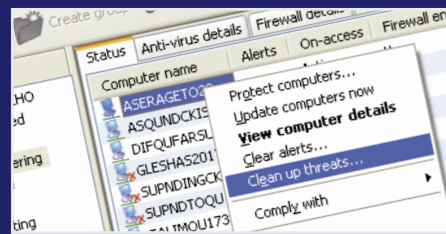
Enterprise Console provides scalable security management, reducing complexity and cost. It enables deployment and update of Sophos Anti-Virus and Sophos Client Firewall across the network – including remote computers – from a single console. It also allows centralized cleanup of malware, policy enforcement, and selective authorization of potentially unwanted applications, such as adware.

Sophos Anti-Virus

Supporting the widest range of platforms in the industry, Sophos Anti-Virus provides complex networks with rapid integrated proactive protection against known and unknown malware, adware and PUAs – plus optional application control. Centrally installed, configured and monitored across the network, it updates automatically with the latest protection from SophosLabs as frequently as every five minutes.

Sophos Client Firewall

Sophos Client Firewall stops zero day threats and prevents intrusion from hackers. Centrally managed, it protects enterprises against known and unknown threats by locking down vulnerable computers, blocking worms, filtering out unauthorized applications, and monitoring application behavior. Location-aware, it enforces full security policies when a remote user connects to the internet.



Sophos Mobile Security

Sophos Mobile Security detects and disinfects mobile viruses and spyware on Windows Mobile devices. On-access, on-demand or scheduled scanning detects and quarantines malware, while visual and email alerts provide notification of blocked threats. You can also create and lock down company-wide security policies for your mobile devices using a configuration tool.



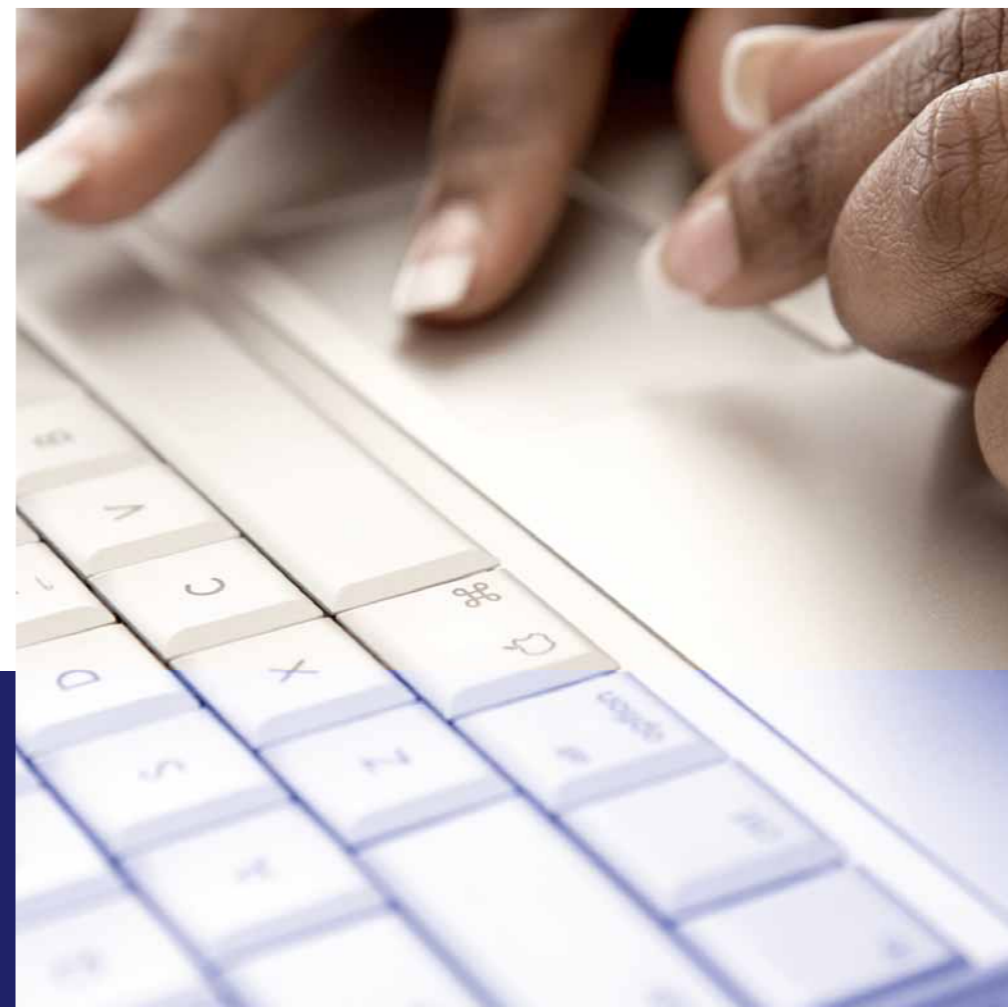
Round-the-clock support from the experts

SophosLabs

Highly skilled analysts in SophosLabs, our global network of threat analysis centers, build on our 20 years' experience to provide all Sophos customers with proactive rapid protection against known and unknown threats. Through a powerful combination of expertise, technology, and global visibility of emerging threats, SophosLabs provides the 24/7 research and fast global response your organization needs to protect it from increasingly complex threats, providing round-the-clock protection against viruses, spyware, adware, PUAs, hackers and spam.

Industry-leading support 24/7

Our 24/7 customer support operation is included as standard in your license and you'll receive unlimited access to our highly acclaimed customer support team. You can contact our engineers for one-to-one support by email or telephone, or use our web-based support knowledgebase. Working from support centers around the world, our experts draw on a wealth of experience and technology to replicate, analyze, and resolve your problems fast.



What's included in Sophos Endpoint Security?



- » Award-winning virus, spyware, adware and hacker protection
- » Central management of anti-malware and firewall from a single console
- » Automatic updates to protection from malware and adware
- » The fastest, smallest updates
- » Inclusive product upgrades for the duration of the license
- » One license for all platforms, with no hidden extras
- » Unlimited 24/7 telephone, email and online support

Evaluate now for free!

See Sophos Endpoint Security in action by viewing our demo or registering for a free 30-day evaluation at www.sophos.com/eseval



How to buy

Find your local Sophos office or Sophos Partner at www.sophos.com/contact
We also offer competitive pricing for charities, government agencies and the education sector.

System requirements

Enterprise Console

Hardware

- » Minimum Pentium III 450 MHz or equivalent

Management server

- » Windows 2003 Server
- » Windows 2000 Server

Remote console

- » Windows 2003
- » Windows XP Professional
- » Windows 2000 Professional or Server

Enterprise Console centrally manages Sophos Anti-Virus and Sophos Client Firewall

Platforms supported

Sophos Anti-Virus

Windows

- » Windows Vista¹
- » Windows 2003¹
- » Windows XP¹
- » Windows 2000¹
- » Windows 95/98/Me and NT4

Supports 64-bit versions of Windows Vista, Windows 2003 and Windows XP, including Itanium 2

Macintosh

- » Mac OS X 10.2/10.3/10.4

Linux

- » Red Hat Linux 9.0²
- » Red Hat Enterprise Linux 2.1 - ES/AS²
- » Red Hat Enterprise Linux 3 - ES/AS/WS²
- » Red Hat Enterprise Linux 4 - ES/AS^{2, 4}
- » SUSE Linux Professional 9.1/9.2/9.3²
- » SUSE Linux Enterprise Server 8²
- » SUSE Linux Enterprise Server 9/10^{2, 4}
- » Novell Open Enterprise Server^{2, 4}
- » TurboLinux 10 Server²
- » Other Red Hat, SUSE, Novell and TurboLinux distributions using libc6 on Intel³

UNIX and other platforms:

- » FreeBSD
- » Solaris on Intel and SPARC, SunOS
- » HP-UX on HP-PA and Itanium
- » AIX
- » SCO UnixWare and OpenServer
- » NetWare
- » OpenVMS on Alpha, VAX and Itanium 2

For more details, visit www.sophos.com

Sophos Anti-Virus for NetApp

- » NetApp enterprise filers running Data ONTAP 6.x (6.1 required, 6.4 recommended) or Data ONTAP 7.x

Requires Windows 2000/2003/XP Pro

Sophos Client Firewall

- » Windows XP Home/Professional
- » Windows 2000 Professional

Sophos Mobile Security

- » Windows Mobile 5 Pocket PC Edition
- » Windows Mobile 5 Pocket PC Phone Edition

1 Adware and PUA detection, Cisco Network Access Control and optional Application Control are supported on these platforms

2 These Linux distributions are supported for on-access and on-demand scanning

3 These Linux distributions are supported for on-demand scanning only

4 32-bit and 64-bit

SOPHOS
secured.

Sophos is the world leader in integrated threat management solutions purpose-built for business, education and government. With 20 years' experience and consolidated anti-virus, anti-spyware and anti-spam expertise, SophosLabs protects even the most complex networks from known and unknown threats. Our reliably engineered, easy-to-operate products protect over 35 million users in more than 150 countries from viruses, spyware, adware and other potentially unwanted applications, hackers, spam and email policy abuse. Round-the-clock vigilance has resulted in our increasingly rapid international growth, expanding user base and continuous profitability. Our instant response to new threats is matched by business-focused, 24/7 technical support, and has led to the highest levels of customer satisfaction in the industry.

www.sophos.com



Boston, USA • Mainz, Germany • Milan, Italy • Oxford, UK • Paris, France
Singapore • Sydney, Australia • Vancouver, Canada • Yokohama, Japan

SES-2/1006 © Copyright 2006. Sophos Plc. All rights reserved. All trademarks are the property of their respective owners.

SOPHOS
secured.