

Sophos Anti-Virus

Sophos Anti-Virus for OS/2 is virus detection and disinfection software which can be installed on OS/2 file servers and workstations. It checks files on local hard disks, floppy disks and networks for the presence of viruses. It operates in on-access, scheduled and on-demand modes. Its unique architecture intelligently determines which files need to be virus checked, maximising user transparency and minimising performance overhead. Sophos Anti-Virus enables centralised installation, configuration, updating and reporting.

How it works

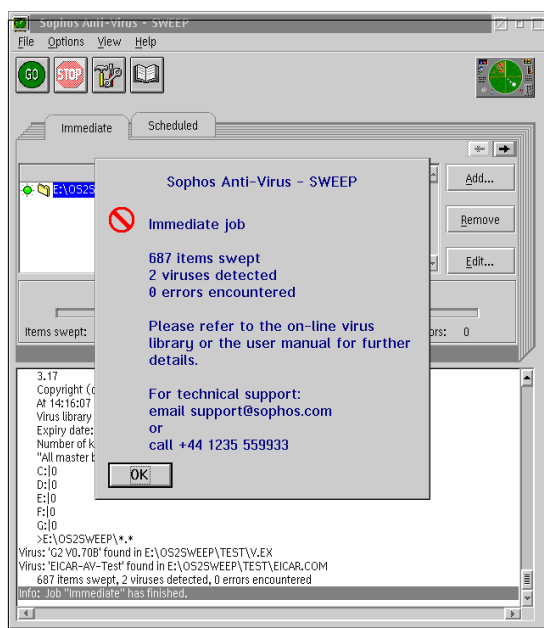
Sophos Anti-Virus for OS/2 offers on-access, scheduled and on-demand scanning, and ensures 100% virus detection.

Sophos's patented **InterCheck** technology optimises on-access virus detection in networked environments. It uses a combination of virus scanning and checksumming to minimise the number of times each file needs to be virus checked, without compromising security.

Sophos Anti-Virus for OS/2 can be installed, configured and updated without visiting desktops, and without requiring user intervention.

Features

- Detects and disinfects macro viruses, boot sector viruses and PE executable viruses.
- Easily detects polymorphic viruses using Sophos's advanced Virus Description Language (VDL) and a built-in code emulator.
- Scans inside encoded and archive files.
- Provides automatic installation on networked PCs from a file server using a login script.
- Provides automatic updating for networked PCs.
- Allows multiple scheduled jobs to be configured for automatic operation, even when no-one is logged in to the machine.
- Features an 'immediate mode' which allows checking on demand.
- Ensures total security by providing automatic centralised reporting of every virus incident.
- Protects WANs, LANs, portables and standalones.
- Includes 24x7x365 support as part of the licence.
- Is updated constantly.



Sophos Anti-Virus for OS/2 finding a virus



Technical details

Product name	Sophos Anti-Virus for OS/2.
Function	Scanning individual workstations and file servers for known viruses and providing centralised logging for individual workstations.
Mode of operation	OS/2 process. In addition to the Graphical User Interface (GUI) version, a Command Line Interface (CLI) version is available.
On-access scanning	InterCheck technology provides local on-access scanning.
Updates	Continuous updates are available via the Sophos website for new viruses detected in the wild. In addition, full monthly updates are available for download. Sophos also sends full updates on CD to all customers at the beginning of each month.
Virus alerts	Sophos Anti-Virus is able to generate and print security reports. Network managers can be automatically notified by a network message to specified users or machines.
Specification of items to be checked	Individual files, recursive searching of subdirectories, individual disk subdirectories, individual disk sectors, ranges of disk sectors, ranges of bytes within disk sectors, and absolute or logical disk sector addressing.
Return codes	Sophos Anti-Virus returns exit codes testable with the 'IF ERRORLEVEL' statement in batch or command files.
Specification of identities	Between monthly updates, interim virus identities (.IDEs) for new in-the-wild viruses can be downloaded from www.sophos.com and added into Sophos Anti-Virus at run-time; they can also be sent as faxed ASCII text.
System requirements	OS/2 Warp version 3 and above. (Version 4 and above required for InterCheck.)
File systems supported	FAT, HPFS, JFS, CDFS.
Networks supported	Novell NetWare, IBM LAN, IBM NFS.

SOPHOS
ANTI-VIRUS
www.sophos.com

Sophos Plc • Abingdon • UK
Sophos Inc • Boston • MA • USA
Sophos Pty Ltd • Sydney • Australia
Sophos Sarl • Paris • France
Sophos GmbH • Nieder-Olm • Germany
Sophos KK • Yokohama • Japan

sales@sophos.com



Sophos Anti-Virus (SAV) has been certified by the ICSA under Windows 95, Windows NT (Alpha), Windows NT (Intel) and NetWare; however, all SAV software shares the same virus data, virus engine and monthly concordance tests.