

# Sophos Anti-Virus

Sophos Anti-Virus for Windows NT/2000/XP is virus detection and disinfection software which can be installed on Windows NT/2000/XP file servers and workstations. It checks local hard disks, floppy disks and networks, internet downloads, email attachments for the presence of viruses, including Macintosh viruses in files stored on the server. It operates in on-access, scheduled and on-demand modes. Its unique architecture intelligently determines which files need to be virus checked, maximising user transparency and minimising performance overhead. Sophos Anti-Virus enables centralised installation, configuration, updating and reporting.

## How it works

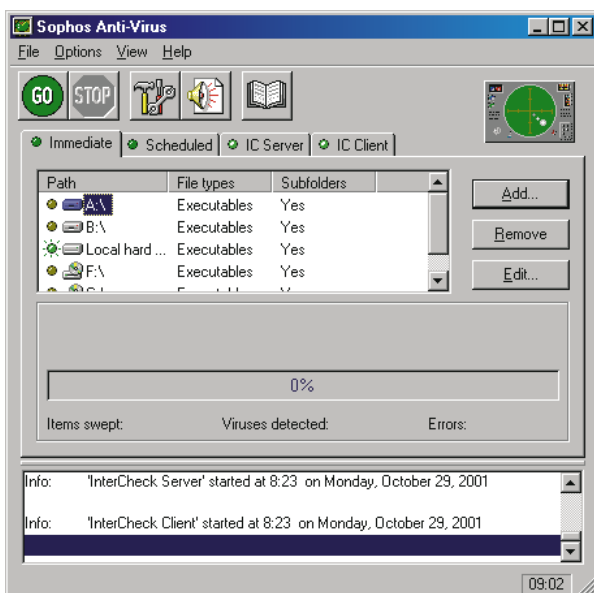
Sophos Anti-Virus for Windows NT/2000/XP offers on-access, scheduled and on-demand scanning, and ensures 100% virus detection.

Sophos's patented **InterCheck** technology optimises on-access virus detection in networked environments. It uses a combination of virus scanning and checksumming to minimise the number of times each file needs to be virus checked, without compromising security.

Sophos Anti-Virus for Windows NT/2000/XP can be installed, configured and updated without visiting desktops, and without requiring user intervention.

## Features

- Detects and disinfects macro viruses, boot sector viruses and PE executable viruses.
- Easily detects polymorphic viruses using Sophos's advanced Virus Description Language (VDL) and a built-in code emulator.
- Scans inside encoded and archive files.
- Allows deployment of Sophos Anti-Virus across an NT/2000/XP network from a central NT/2000/XP workstation.
- Allows third-party applications to integrate with the Sophos Anti-Virus detection engine via SAVI (Sophos Anti-Virus Interface).
- Provides automatic updating for networked PCs.
- Allows multiple scheduled jobs to be configured for automatic operation, even when no-one is logged in.
- Prevents non-administrative users from altering scan settings or disabling InterCheck.
- Ensures total security by providing automatic centralised reporting of every virus incident.
- Is available in multiple language versions.
- Allows pull-based, automated retrieval of Sophos Anti-Virus updates from the Sophos website.
- Protects WANs, LANs, portables and standalones.
- Includes 24x7x365 support as part of the licence.
- Is updated constantly.



Sophos Anti-Virus for Windows NT/2000/XP



## Technical details

<b>Product name</b>	Sophos Anti-Virus for Windows NT/2000/XP.
<b>Function</b>	Scanning individual workstations and file servers for known viruses and providing centralised reporting.
<b>Mode of operation</b>	Fully 32-bit Windows NT/2000/XP process. In addition to the Graphical User Interface (GUI) version, a Command Line Interface (CLI) version is available.
<b>On-access scanning</b>	InterCheck FSFD (File System Filter Driver).
<b>Updates</b>	Continuous updates are available via the Sophos website for new viruses detected in the wild. In addition, full monthly updates are available for download. Sophos also sends full updates on CD to all customers at the beginning of each month.
<b>Virus alerts</b>	Network managers can be automatically notified by a network message to specified users or machines, by SMTP email or by InterCheck log messages. In addition, the user can be alerted and an entry can be placed in the Windows NT/2000/XP application event log.
<b>Specification of items to be checked</b>	Individual files, recursive searching of subdirectories and individual disk subdirectories.
<b>Specification of identities</b>	Between monthly updates, interim virus identities (.IDEs) for new in-the-wild viruses can be downloaded from <a href="http://www.sophos.com">www.sophos.com</a> and added into Sophos Anti-Virus at run-time; they can also be sent as faxed ASCII text.
<b>System requirements</b>	Windows NT version 4 or above, Windows 2000 or Windows XP.
<b>File systems supported</b>	FAT, NTFS, HPFS, CDFS, InterDrive NFS (FTP Software), Chameleon NFS (NetManage), Maestro NFS (Hummingbird Communications), Solstice NFS (Sun Microsystems).
<b>Networks supported</b>	Microsoft Networking, Novell NetWare, TCP/IP and Digital Pathworks.

**SOPHOS**  
ANTI-VIRUS

[www.sophos.com](http://www.sophos.com)

Sophos Plc • Abingdon • UK  
Sophos Inc • Boston • MA • USA  
Sophos Pty Ltd • Sydney • Australia  
Sophos Sarl • Paris • France  
Sophos GmbH • Nieder-Olm • Germany  
Sophos KK • Yokohama • Japan

[sales@sophos.com](mailto:sales@sophos.com)

