

# MailMonitor for Exchange 2000

Sophos  
Email/Gateway  
Windows 2000

MailMonitor for Exchange 2000 detects, reports and disinfects viruses in Exchange 2000 mailboxes. It is installed on Exchange 2000 servers and operates in immediate, scheduled and real-time modes. Infected body text or attachments are deleted, quarantined or automatically disinfects. Comprehensive messaging allows MailMonitor to notify administrators, senders and recipients of any viruses found. MailMonitor for Exchange 2000 can find viruses in attachments compressed with ZIP and other popular compression utilities.

Virus detection and disinfection is performed by the high-speed Sophos virus detection engine, which allows easy, central and transparent updating of virus definitions.

## How it works

Sophos MailMonitor for Exchange 2000 uses SAVI (Sophos Anti-Virus Interface), which is included on the CD as part of the MailMonitor installation.

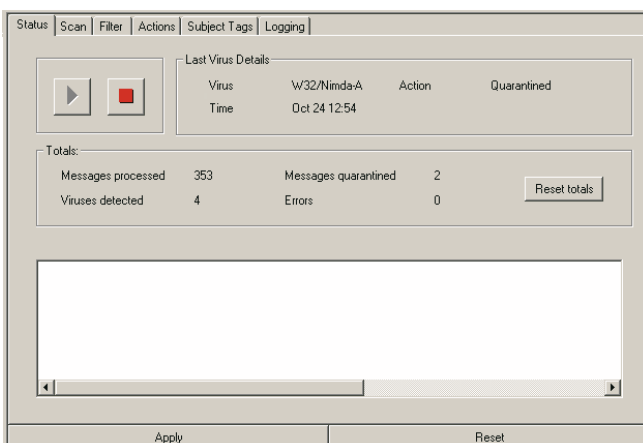
Once installed, MailMonitor operates in three modes:

- **Immediate:** scans Exchange 2000 mailboxes immediately for infected attachments.
- **Scheduled:** scans Exchange 2000 mailboxes on scheduled days and at specified times.
- **Real-time:** intercepts and scans email attachments as they are received.

Infected body text or attachments are disinfects, deleted or quarantined. The administrator has full control over quarantined messages.

## Features

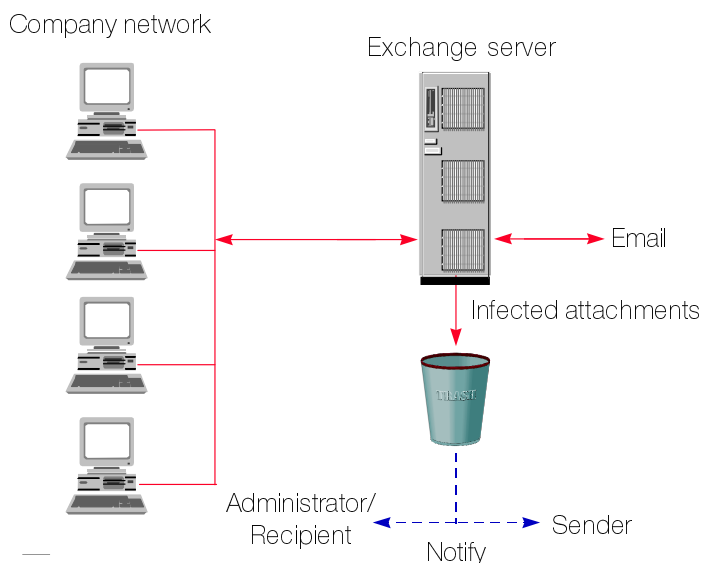
- Detects and disinfects viruses in incoming and outgoing email.
- Allows multiple scheduled jobs to be configured for automatic scanning of mailboxes at predetermined times.
- Scans Exchange 2000 mailboxes on demand.
- Provides automatic centralised reporting of virus incidents.
- Allows remote administration.
- Protects WANs and LANs from viruses before they enter the organisation.
- Is transparent to end users.
- Detects viruses in compressed attachments including recursive ZIP, LZH, ARJ, RAR, GZIP, TAR and CMZ archives.
- Detects Macintosh viruses.
- Is updated constantly.
- Easily detects polymorphic viruses using Sophos's advanced Virus Description Language (VDL) and a built-in code emulator.



MailMonitor for Exchange 2000

## Technical details

<b>Product name</b>	MailMonitor for Exchange 2000.
<b>Function</b>	Scanning Exchange 2000 mailboxes and incoming/outgoing email for known viruses.
<b>Mode of operation</b>	Runs as an Exchange add-in.
<b>Real-time scanning</b>	Incoming/outgoing email.
<b>Updates</b>	Continuous updates are available via the Sophos website for new viruses detected in the wild. In addition, full monthly updates are available for download. Sophos also sends full updates on CD to all customers at the beginning of each month.
<b>Virus alerts</b>	Network administrators can be automatically notified. In addition, the senders and recipients of infected email can be alerted. All virus incidents are logged.
<b>Specification of identities</b>	Between monthly updates administrators can be automatically informed of interim virus identities (IDEs) for new in-the-wild viruses. These can be downloaded from <a href="http://www.sophos.com">www.sophos.com</a> .
<b>System requirements</b>	Microsoft Exchange Server 2000 with Windows 2000 (Service Pack 1)



**SOPHOS**  
ANTI-VIRUS

[www.sophos.com](http://www.sophos.com)

Sophos Plc • Oxford • UK  
Sophos Americas • Boston • MA • USA  
Sophos Pty Ltd • Sydney • Australia  
Sophos Sarl • Paris • France  
Sophos GmbH • Mainz • Germany  
Sophos Srl • Milan • Italy  
Sophos KK • Yokohama • Japan  
Sophos Asia Pte Ltd • Singapore  
[sales@sophos.com](mailto:sales@sophos.com)